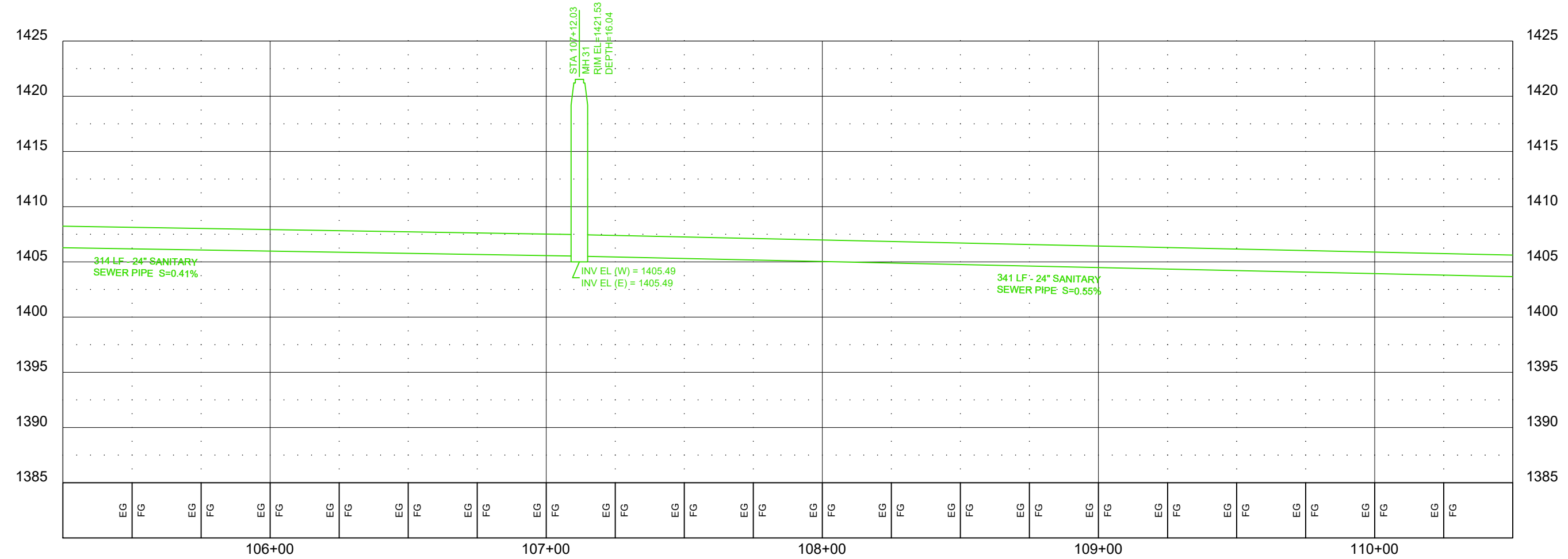




PROJECT / SHEET TITLE:
HARRISBURG WESTSIDE SANITARY SEWER EXTENSION - PHASE 1
273RD STREET PLAN & PROFILE STA 105+25 TO STA 110+50

HARRISBURG, SOUTH DAKOTA

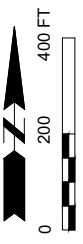
REV.	DATE	DESCRIPTION



FOR REVIEW ONLY
NOT FOR CONSTRUCTION

JOB No.:	23453.00
DATE:	MARCH 2022
ENG / ARCH:	TLM
DESIGNER:	ASW
TECHNICIAN:	CKM

MAIN LIFT STATION TO HONEYSUCKLE ALIGNMENT



- LEGEND:**
- New 36"/30"/24" Sewer Interceptor
 - Replacement of Existing 12" Sewer Interceptor with 24" Sewer Interceptor

PROJECT / SHEET TITLE:
HARRISBURG WESTSIDE SANITARY SEWER EXTENSION - PHASE 1

ALIGNMENT LAYOUT
 HARRISBURG, SOUTH DAKOTA

REV.	DATE	DESCRIPTION

**FOR REVIEW ONLY
 NOT FOR CONSTRUCTION**

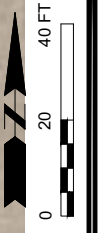
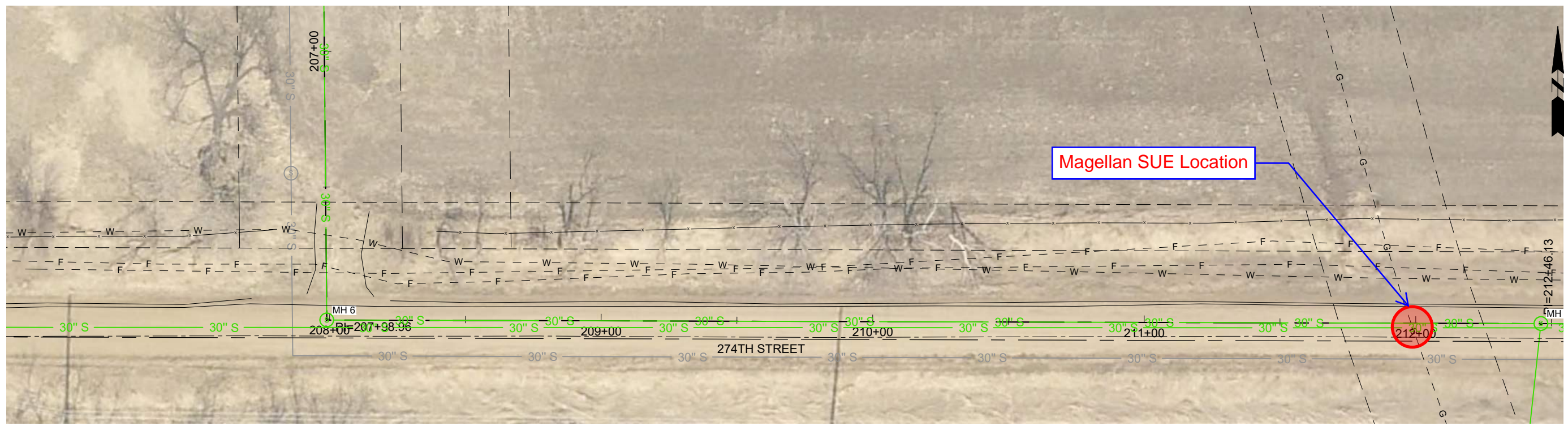
JOB No.:	23453.00
DATE:	FEBRUARY 2022
ENG / ARCH:	TLM
DESIGNER:	ASW
TECHNICIAN:	CKM

SCALE REDUCTION BAR
 0 1/2" 1"

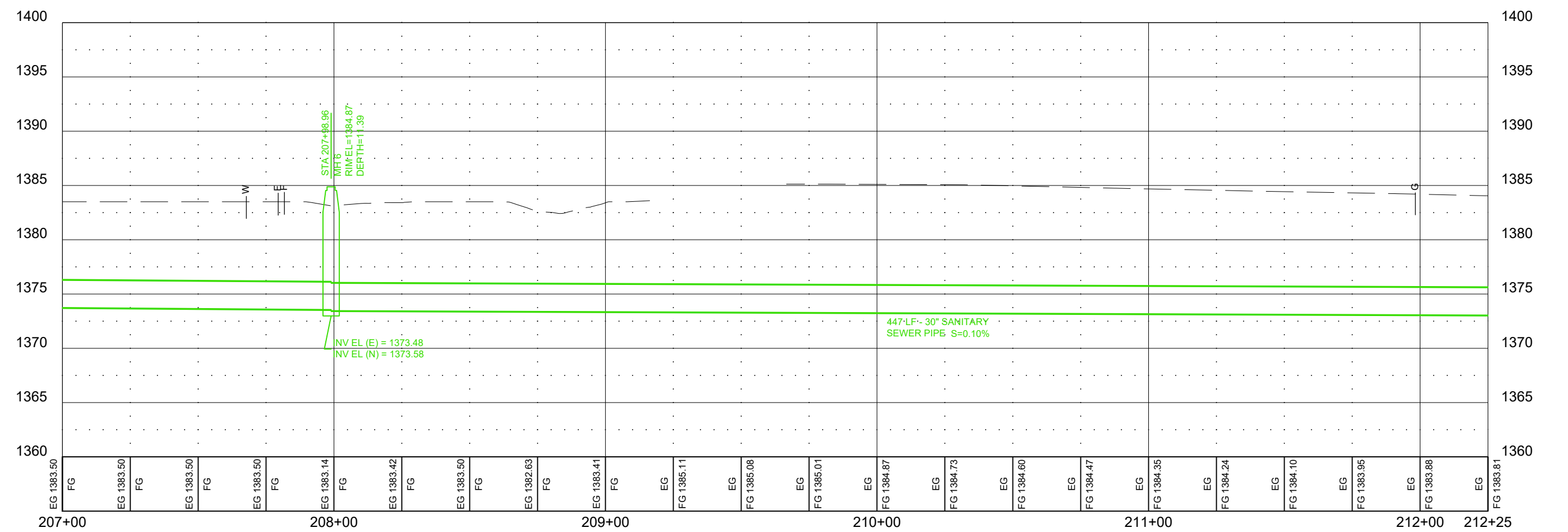
SHEET No. : **1**

C:\Users\alexw\Desktop\Harrisburg\Exhibits.dwg; 2/15/2022 4:03 PM

BANNER
 engineering a better community
 www.bannerassociates.com · Toll Free: 1.855.323.6342



Magellan SUE Location



PROJECT / SHEET TITLE:
HARRISBURG WESTSIDE SANITARY SEWER EXTENSION - PHASE 1
HARR TO 274TH PLAN & PROFILE STA 207+00 TO STA 212+25
 HARRISBURG, SOUTH DAKOTA

REV.	DATE	DESCRIPTION

FOR REVIEW ONLY
NOT FOR CONSTRUCTION

JOB No.: 23453.00
 DATE: MARCH 2022
 ENG / ARCH: TLM
 DESIGNER: ASW
 TECHNICIAN: CKM

SCALE REDUCTION BAR
 SHEET No.: **I-21**