

ADDENDUM | No. 1

PROJECT	Westside Sanitary Sewer Extension – Phase 1
BID DATE	2:00 PM Central Time Zone 10/19/2022
BID LOCATION	Harrisburg City Hall 301 E. Willow Street, Harrisburg, SD 57032
ISSUE DATE	10/12/2022
NOTICE	Failure to acknowledge all addenda in the BID may cause rejection of the BID. See Instructions to Bidders.

SCOPE OF THIS ADDENDUM

The following becomes a part of the original project manual and drawings, taking precedence over the items that may conflict. The bidder shall note receipt and make acknowledgment of the Addendum on his/her bid form, incorporating its provision in his/her bid.

GENERAL

Clarification:

C-111 Advertisement for Bids

The third paragraph on the second page of the Advertisement for Bids states:

This project may be partially funded using American Rescue Plan Act (ARPA) funds. As a condition of the ARPA funding guidelines, the Contractor is shall meet the following minimum requirements:

Based on the “Build America, Buy America” provisions of the Infrastructure Investment and Jobs Act (IIJA) and E.O. 14005 which provide that, as appropriate and to the extent consistent with law, a preference will be provided to Contractors for the purchase, acquisition, or use of goods, products, or materials produced in the United States (including but not limited to non-iron and steel metals, lumber, cement, and other manufactured products.) The Contractor shall provide documentation of their efforts to meet the provisions of “Build America, Buy America” upon request.

A copy of the ARPA funding guidance that outlines the requirements associated with projects that utilize this funding can be found at the following link: <https://home.treasury.gov/policy->



[issues/coronavirus/assistance-for-state-local-and-tribal-governments/state-and-local-fiscal-recovery-funds/](#)

After the project was advertised, the DANR issued an updated to the State Revolving Fund Adjustment Period Waiver for the Build America, Buy America Act. As a result, please refer to Article 22.02 of C-200, Instructions to Bidders which removed the Build America, Buy America requirements for this project and instead placed a domestic preference for procurements in the project as stated below.

Domestic preferences for procurements.

(a) As appropriate and to the extent consistent with law, the non-Federal entity should, to the greatest extent practicable under a Federal award, provide a preference for the purchase, acquisition, or use of goods, products, or materials produced in the United States (including but not limited to iron, aluminum, steel, cement, and other manufactured products). The requirements of this section must be included in all subawards including all contracts and purchase orders for work or products under this award.

(b) For purposes of this section:

(1) “Produced in the United States” means, for iron and steel products, that all manufacturing processes, from the initial melting stage through the application of coatings, occurred in the United States.

(2) “Manufactured products” means items and construction materials composed in whole or in part of non-ferrous metals such as aluminum; plastics and polymer-based products such as polyvinyl chloride pipe; aggregates such as concrete; glass, including optical fiber; and lumber.”

PROJECT MANUAL

The following additions, changes and clarifications have been made to the Project Manual.

C-410 Bid Form, C-420 Bid Bond, and bidding attachments.

Two sets of bid forms, bid bonds and bidding attachments were provided in the Project Manual. Please replace those with the Bid Form, Bid Bond, and attachments included with this addendum.

City of Sioux Falls Supplemental Standard Specifications for Sanitary Sewer Construction Section 100

Replace 2.1.1 with the following, changing the pipe stiffness requirement for large diameter PVC TO PS 46:

- 2.1.1 Polyvinyl Chloride (PVC) Sewer Pipe and Fittings. PVC pipe 15 inches in diameter or smaller shall meet the requirements of ASTM D-3034, Type PSM, SDR 35 minimum; PVC pipe 18 inches through 36 inches in diameter shall meet the requirements of ASTM F-679 PS 46. The pipe shall be made of PVC plastic having a cell classification of 12454 or 12364 or 13364.



City of Harrisburg Special Provisions for HOBAS Pipe.

Replace 2.5 C. with the following increasing the pipe stiffness requirement for direct bury HOBAS to 46 psi:

- C. Stiffness: Minimum pipe stiffness when tested in accordance with ASTM D2412 shall normally be 46 psi for direct bury installations or 140 psi for jacking installations.

DRAWINGS

The following additions, changes and clarifications have been made to the Drawings.

Drawing Sheet D-4

For **GRADING**, replace the third paragraph under UNCLASSIFIED EXCAVATION with the following:

All excavations made for underground utilities are incidental to the installation of that utility. All spoil material removed for pipe installation is the property of the City and shall be hauled to the Harrisburg City Shop at 801 Prairie Street, Harrisburg, SD 57032 and placed at a location on that site as directed by the Public Works Director. All spoil material, the costs for removal, and hauling it to the Harrisburg City Shop are incidental to pipe installation costs.

For **GRADING**, replace the fifth paragraph under UNCLASSIFIED EXCAVATION with the following:

The excess soil resulting from earthwork activities, if any, shall become the property of the City of Harrisburg. It shall be hauled to the Harrisburg City Shop at 801 Prairie Street, Harrisburg, SD 57032 and placed at a location on that site as directed by the Public Works Director. All excess soil material, the costs for removal, and hauling it to the Harrisburg City Shop are incidental to the project.

For **SANITARY SEWER**, add the following paragraph under SANITARY SEWER-GENERAL:

- 5. Either PVC or HOBAS pipe material conforming to the project specifications will be allowed for use on 8" through 36" Sanitary Sewer Pipe.

Drawing Sheet F-1

For **General Maintenance of Traffic**, replace the second paragraph under item 2. with the following:

For closures on Honeysuckle Drive and Cliff Avenue, the Contractor shall notify the Engineer 10 days prior to installing traffic control to allow City of Harrisburg to place their variable message boards to notify drivers of the upcoming closures.

Drawing Sheet I-20

At STA 225+45 – CL TO 14' LT

Replace "1 EA – SEWER CAP" with the following:

1 EA – SEWER CAP WITH CONCRETE THRUST BLOCK FOR CAP (SEE DETAIL) per the "SANITARY SEWER CONCRETE THRUST BLOCK FOR CAP" detail provided with this addendum.



Drawing Sheet I-27

Replace existing Sheet I-27 with attached Sheet I-27R. Bypass pumping is being relocated to an upstream manhole.

Drawing Sheet N-18

Replace existing Sheet N-18 with attached Sheet N-18R. Sanitary Sewer Concrete Thrust Block for Cap detail has been added to sheet.

Drawing Sheet N-20R

Add Sheet N-20R to include a bedding detail for HOBAS pipe.

NOTE

The Plan Holders List and Addendums are available on our website at <http://www.bannerassociates.com> by clicking on **View Bid Information / Project Name / Project Information** link.

Project Manual and Drawing inquiries regarding the work should be directed to:

CONTACT PERSON(S)

Banner Associates, Inc. Tel 1-605-692-6342 | Toll Free 1-855-323-6342 | Fax 1-605-692-5714

Tanya Miller	Project Manager	tanyam@bannerassociates.com
Alex Welbig	Project Engineer	alexw@bannerassociates.com

ATTACHMENTS

- 1. C-410 Bid Form, C-420 Bid Bond, and bidding attachments.
- 2. Sheet I-27R
- 3. Sheet N-18R
- 4. Sheet N-20R



Tanya Miller, P.E. #8326

BID FORM FOR CONSTRUCTION CONTRACT

The terms used in this Bid with initial capital letters have the meanings stated in the Instructions to Bidders, the General Conditions, and the Supplementary Conditions.

ARTICLE 1—OWNER AND BIDDER

1.01 This Bid is submitted to:

**City of Harrisburg
301 E. Willow St
Harrisburg, South Dakota 57032**

1.02 The undersigned Bidder proposes and agrees, if this Bid is accepted, to enter into an Agreement with Owner in the form included in the Bidding Documents to perform all Work as specified or indicated in the Bidding Documents for the prices and within the times indicated in this Bid and in accordance with the other terms and conditions of the Bidding Documents.

ARTICLE 2—ATTACHMENTS TO THIS BID

2.01 The following documents are submitted with and made a condition of this Bid:

- A. Required Bid security;
- B. List of Proposed Subcontractors and Suppliers;
- C. DBE Subcontractors Solicitation Information DBE-6;
- D. Certification Regarding Debarment, Suspension, and Other Responsibility Matters;
- E. American Iron and Steel Certification
- F. Evidence of authority to do business in the state of the Project; or a written covenant to obtain such authority within the time for acceptance of Bids;
- G. Contractor's license number as evidence of Bidder's State Contractor's License or a covenant by Bidder to obtain said license within the time for acceptance of Bids;

2.02 The following forms must be submitted by the apparent low-bidder within ten calendar days of the bid opening:

- A. Form 6100-3 – DBE Subcontractor Performance Form
- B. Form 6100-4 - DBE Subcontractor Utilization Form;
- C. EEO-7 – Notification of Subcontractor Awarded > \$10,000;
- D. Bidders' Statement of Qualifications (C-451 – Qualifications Statement);

ARTICLE 3—BASIS OF BID—UNIT PRICES

3.01 *Unit Price Bids*

- A. Bidder will perform the following Work at the indicated unit prices:

WESTSIDE SANITARY SEWER IMPROVEMENTS – PHASE 1
HARRISBURG, SOUTH DAKOTA

LINE ITEM	BID ITEM	DESCRIPTION	UNITS	ESTIMATED QUANTITY	UNIT BID PRICE	BID AMOUNT
Base Bid						
General Items						
1	9.0010	Mobilization	LS	1		
2	100.0100	Clearing	LS	1		
3	634.0010	Flagging	Hour	150		
4	634.0110	Traffic Control	SqFt	655		
5	634.0120	Traffic Control, Miscellaneous	LS	1		
6	634.0265	Type 3 Barricade, 6' Double Sided	Each	10		
7	634.0285	Type 3 Barricade, 8' Double Sided	Each	39		
8	998.0100	Railroad Protective Insurance	LS	1		
9	SPECIAL	Magellan Protective Insurance	LS	1		
Erosion Control						
10	120.6300	Water For Vegetation	MGal	3780		
11	230.0010	Placing Topsoil	CY	11679		
12	230.0020	Placing Contractor Furnished Topsoil	CY	2643		
13	230.0300	Salvage Topsoil	CY	12193		
14	700.0310	Class B Riprap	CY	308		
15	831.0110	Type B Drainage Fabric	SqYd	461		
16	730.0301	Quality Green Turf Mix	Lb	1149		
17	SPECIAL	Type B Permanent Seed Mixture	Lb	145		
18	730.0304	Wetland Seed Mixture 3	Lb	18		
19	731.0100	Fertilizing	Lb	4295		
20	731.0200	Weed Control	SqYd	62893		
21	731.0210	Weed Control - Project	LS	1		
22	732.0100	Fiber Mulching	Ton	5		
23	SPECIAL	Straw Mulching	Ton	17		
24	734.0105	Erosion Control Blanket	SqYd	946		
25	734.0150	6" Diameter Erosion Control Wattle	Ft	2162		
26	734.0601	Silt Fence	Ft	18987		
27	735.0611	Temporary Stream Crossing	Each	5		
28	734.0850	Inlet Protection	Each	14		
29	734.5010	Sweeping	Hour	34		
30	734.6001	Temporary Vehicle Tracking Control	Each	11		
31	734.6006	Concrete Washout Area	Each	3		
32	950.5410	Temporary Manhole Construction Frame and Cover	Each	39		
Removals						
33	100.0020	Clear and Grub Tree	Each	2		
34	110.0300	Remove Concrete Curb and Gutter	Ft	224		

EJCDC® C-410, Bid Form for Construction Contract.

Copyright© 2018 National Society of Professional Engineers, American Council of Engineering Companies,
and American Society of Civil Engineers. All rights reserved.

WESTSIDE SANITARY SEWER IMPROVEMENTS – PHASE 1
HARRISBURG, SOUTH DAKOTA

LINE ITEM	BID ITEM	DESCRIPTION	UNITS	ESTIMATED QUANTITY	UNIT BID PRICE	BID AMOUNT
35	110.0605	Remove Chain Link Fence	Ft	144		
36	110.7800	Remove Chain Link Fence For Reset	Ft	42		
37	110.7802	Remove Fence For Reset	Ft	308		
38	110.1010	Remove Asphalt Concrete Pavement	SqYd	5619		
39	110.1100	Remove Concrete Pavement	SqYd	17		
40	110.1140	Remove Concrete Sidewalk	SqYd	96		
41	110.8100	Saw Existing Asphalt	Ft	267		
42	110.8110	Saw Existing PCC Pavement	Ft	61		
43	999.1080	Orange Plastic Safety Fence	Ft	2427		
44	999.0021	Remove and Reset Mailbox and Post	Each	1		
45	999.0023	Temporary Mailbox	Each	72		
46	SPECIAL	Demo & Remove Coyote Lift Station	LS	1		
47	SPECIAL	Demo & Abandon Honeysuckle Lift Station	LS	1		
48	SPECIAL	Demo & Remove South Cliff Lift Station	LS	1		
Grading						
49	120.0010	Unclassified Excavation	CuYd	8056		
50	120.0100	Unclassified Excavation, Digouts	CuYd	280		
51	120.0150	Unclassified Excavation, Grade Stabilization	CuYd	770		
52	120.0480	Scarify and Recompact Subgrade	SqYd	13155		
53	120.6000	Water For Dust Control	Mgal	160		
54	250.0020	Incidental Work, Grading	LS	1		
55	831.0050	Geotextile Fabric For Subgrade Stabilization	SqYd	10390		
Sanitary Sewer						
56	110.0520	Remove Sanitary Sewer Pipe	Ft	881		
57	110.0525	Abandon Sanitary Sewer Pipe	Ft	2075		
58	110.0465	Abandon Sanitary Sewer Manhole	Each	3		
59	110.1461	Remove Sanitary Sewer Manhole	Each	9		
60	120.7000	Select Granular Backfill for Sanitary Sewer	Ton	3000		
61	462.0200	Controlled Density Fill (K-Crete)	CuYd	58		
62	950.0102	8" Sanitary Sewer Pipe 8' to 10' Deep	Ft	33		
63	950.0103	8" Sanitary Sewer Pipe 10' to 12' Deep	Ft	10		
64	950.0104	8" Sanitary Sewer Pipe 12' to 14' Deep	Ft	60		
65	950.0105	8" Sanitary Sewer Pipe 14' to 16' Deep	Ft	11		
66	950.0106	8" Sanitary Sewer Pipe 16' to 18' Deep	Ft	22		
67	950.0203	10" Sanitary Sewer Pipe 10' to 12' Deep	Ft	85		
68	950.0204	10" Sanitary Sewer Pipe 12' to 14' Deep	Ft	44		
69	950.0302	12" Sanitary Sewer Pipe 8' to 10' Deep	Ft	95		
70	950.0303	12" Sanitary Sewer Pipe 10' to 12' Deep	Ft	174		
71	950.0304	12" Sanitary Sewer Pipe 12' to 14' Deep	Ft	116		

EJCDC® C-410, Bid Form for Construction Contract.

Copyright® 2018 National Society of Professional Engineers, American Council of Engineering Companies,
and American Society of Civil Engineers. All rights reserved.

WESTSIDE SANITARY SEWER IMPROVEMENTS – PHASE 1
HARRISBURG, SOUTH DAKOTA

LINE ITEM	BID ITEM	DESCRIPTION	UNITS	ESTIMATED QUANTITY	UNIT BID PRICE	BID AMOUNT
72	950.0305	12" Sanitary Sewer Pipe 14' to 16' Deep	Ft	44		
73	950.0306	12" Sanitary Sewer Pipe 16' to 18' Deep	Ft	34		
74	950.0307	12" Sanitary Sewer Pipe 18' to 20' Deep	Ft	30		
75	950.0603	21" Sanitary Sewer Pipe 10' to 12' Deep	Ft	10		
76	950.0702	24" Sanitary Sewer Pipe 8' to 10' Deep	Ft	79		
77	950.0703	24" Sanitary Sewer Pipe 10' to 12' Deep	Ft	810		
78	950.0704	24" Sanitary Sewer Pipe 12' to 14' Deep	Ft	1015		
79	950.0705	24" Sanitary Sewer Pipe 14' to 16' Deep	Ft	551		
80	950.0706	24" Sanitary Sewer Pipe 16' to 18' Deep	Ft	2050		
81	950.0707	24" Sanitary Sewer Pipe 18' to 20' Deep	Ft	814		
82	950.0708	24" Sanitary Sewer Pipe 20' to 22' Deep	Ft	280		
83	950.0709	24" Sanitary Sewer Pipe 22' to 24' Deep	Ft	9		
84	950.0710	24" Sanitary Sewer Pipe 24' to 26' Deep	Ft	9		
85	950.0711	24" Sanitary Sewer Pipe 26' to 28' Deep	Ft	63		
86	SPECIAL	Install City Provided 24" SDR26/PS115 PVC Sanitary Sewer Pipe 20' to 22' Deep	Ft	672		
87	SPECIAL	Install City Provided 24" SDR35/PS46 PVC Sanitary Sewer Pipe 16' to 18' Deep	Ft	525		
88	SPECIAL	Install City Provided 24" SDR35/PS46 PVC Sanitary Sewer Pipe 18' to 20' Deep	Ft	189		
89	950.0904	30" Sanitary Sewer Pipe 12' to 14' Deep	Ft	533		
90	950.0905	30" Sanitary Sewer Pipe 14' to 16' Deep	Ft	621		
91	950.0906	30" Sanitary Sewer Pipe 16' to 18' Deep	Ft	669		
92	950.0907	30" Sanitary Sewer Pipe 18' to 20' Deep	Ft	30		
93	950.1102	36" Sanitary Sewer Pipe 8' to 10' Deep	Ft	290		
94	950.1103	36" Sanitary Sewer Pipe 10' to 12' Deep	Ft	907		
95	950.1104	36" Sanitary Sewer Pipe 12' to 14' Deep	Ft	274		
96	950.1105	36" Sanitary Sewer Pipe 14' to 16' Deep	Ft	176		
97	950.1106	36" Sanitary Sewer Pipe 16' to 18' Deep	Ft	693		
98	950.1107	36" Sanitary Sewer Pipe 18' to 20' Deep	Ft	139		
99	950.2000	8" Sanitary Sewer Pipe Bedding Material	Ft	136		
100	950.2001	10" Sanitary Sewer Pipe Bedding Material	Ft	129		
101	950.2002	12" Sanitary Sewer Pipe Bedding Material	Ft	493		
102	950.2005	21" Sanitary Sewer Pipe Bedding Material	Ft	10		
103	950.2006	24" Sanitary Sewer Pipe Bedding Material	Ft	7066		
104	950.2008	30" Sanitary Sewer Pipe Bedding Material	Ft	1853		
105	950.2010	36" Sanitary Sewer Pipe Bedding Material	Ft	2479		
106	950.3102	8" Sewer Couplings	Each	7		
107	950.3103	10" Sewer Couplings	Each	1		
108	950.3104	12" Sewer Couplings	Each	1		

EJCDC® C-410, Bid Form for Construction Contract.

Copyright© 2018 National Society of Professional Engineers, American Council of Engineering Companies, and American Society of Civil Engineers. All rights reserved.

WESTSIDE SANITARY SEWER IMPROVEMENTS – PHASE 1
HARRISBURG, SOUTH DAKOTA

LINE ITEM	BID ITEM	DESCRIPTION	UNITS	ESTIMATED QUANTITY	UNIT BID PRICE	BID AMOUNT
109	SPECIAL	21" Sewer Couplings	Each	1		
110	950.3107	24" Sewer Couplings	Each	1		
111	950.3202	8" Sewer Plug	Each	3		
112	950.3208	24" Sewer Plug	Each	1		
113	950.3212	36" Sewer Cap w/ Concrete Thrust Block for Cap	Each	1		
114	SPECIAL	24" 22.5 Deg. Sewer Bend w/ Concrete Thrust Block	Each	2		
115	950.4103	48" Lined Manhole 10'-12' Deep	Each	1		
116	950.4104	48" Lined Manhole 12'-14' Deep	Each	1		
117	950.4203	60" Lined Manhole 10'-12' Deep	Each	3		
118	950.4204	60" Lined Manhole 12'-14' Deep	Each	6		
119	950.4205	60" Lined Manhole 14'-16' Deep	Each	5		
120	950.4206	60" Lined Manhole 16'-18' Deep	Each	13		
121	950.4207	60" Lined Manhole 18'-20' Deep	Each	4		
122	950.4208	60" Lined Manhole 20'-22' Deep	Each	2		
123	950.4211	60" Lined Manhole 26'-28' Deep	Each	1		
124	950.4303	72" Lined Manhole 10'-12' Deep	Each	1		
125	950.4306	72" Lined Manhole 16'-18' Deep	Each	2		
126	950.4700	Manhole Drop Section	Each	9		
127	950.4802	8" Boots For Manhole	Each	9		
128	950.4803	10" Boots For Manhole	Each	1		
129	950.4804	12" Boots For Manhole	Each	3		
130	950.4807	21" Boots For Manhole	Each	1		
131	950.4808	24" Boots For Manhole	Each	48		
132	950.4810	30" Boots For Manhole	Each	10		
133	950.4812	36" Boots For Manhole	Each	16		
134	950.5000	Adjust Manhole	Each	39		
135	950.5100	Connection Into Existing Manhole	Each	2		
136	950.5120	Manhole Bench and Invert Reconstruct	Each	2		
137	950.5200	Trench Dewatering	LS	1		
138	950.5250	Sanitary Sewer Temporary Bypass	LS	1		
139	950.5300	Manhole Frame and Cover	Each	4		
140	951.5310	Manhole Frame with Bolt Down Cover Plate	Each	35		
141	951.5401	Manhole Marker Type 1	Each	28		
142	950.5600	Manhole Exfiltration\ Vacuum Test	Each	39		
143	950.5620	Sewer Pipe Deflection Test	Ft	12030		
144	260.7010	Trench Stabilization Material	Ton	300		
145	900.0450	Valve Box Adjustment	Each	1		

EJCDC® C-410, Bid Form for Construction Contract.

Copyright© 2018 National Society of Professional Engineers, American Council of Engineering Companies, and American Society of Civil Engineers. All rights reserved.

WESTSIDE SANITARY SEWER IMPROVEMENTS – PHASE 1
HARRISBURG, SOUTH DAKOTA

LINE ITEM	BID ITEM	DESCRIPTION	UNITS	ESTIMATED QUANTITY	UNIT BID PRICE	BID AMOUNT
146	950.5700	Locating Utility	Each	2		
147	950.5710	Verify Utility	Each	4		
148	975.1100	Casing Pipe	Ft	120		
149	SPECIAL	Pipe Weights for Buoyancy	Each	18		
150	SPECIAL	Jack & Bore BNSF Railroad	Ft	180		
Storm Drainage						
151	SPECIAL	Salvage and Reinstall Storm Pipe	Ft	127		
152	SPECIAL	Salvage and Reinstall Nyloplast Area Inlet	Each	1		
Surfacing						
153	120.6200	Water For Granular Material	Mgal	143		
154	260.1010	Aggregate Base Course	Ton	7300		
155	260.3010	Gravel Surfacing	Ton	4160		
156	320.1215	Asphalt Concrete Composite - PG 58-28	Ton	1701		
157	620.4100	Reset Fence	Ft	308		
158	621.0040	4' Chain Link Fence with Top Rail	Ft	114		
159	621.0520	Reset Chain Link Fence	Ft	42		
160	650.7000	Concrete Curb & Gutter Type SF66	Ft	224		
161	650.8000	Concrete Valley Gutter 6" Thick	SqYd	18		
162	651.0040	4" Concrete Sidewalk	SqFt	862		
Permanent Signage						
163	110.5021	Salvage Traffic Sign for Reset	Each	1		
Total of All Unit Price Bid Items						

B. Bidder acknowledges that:

1. each Bid Unit Price includes an amount considered by Bidder to be adequate to cover Contractor's overhead and profit for each separately identified item, and
2. estimated quantities are not guaranteed, and are solely for the purpose of comparison of Bids, and final payment for all Unit Price Work will be based on actual quantities, determined as provided in the Contract Documents.

ARTICLE 4—TIME OF COMPLETION

- 4.01 Bidder agrees that the Work will be substantially complete and will be completed and ready for final payment in accordance with Paragraph 15.06 of the General Conditions on or before the dates or within the number of calendar days indicated in the Agreement.
- 4.02 Bidder accepts the provisions of the Agreement as to liquidated damages.

ARTICLE 5—BIDDER’S ACKNOWLEDGEMENTS: ACCEPTANCE PERIOD, INSTRUCTIONS, AND RECEIPT OF ADDENDA

5.01 *Bid Acceptance Period*

- A. This Bid will remain subject to acceptance for 30 days after the Bid opening, or for such longer period of time that Bidder may agree to in writing upon request of Owner.

5.02 *Instructions to Bidders*

- A. Bidder accepts all of the terms and conditions of the Instructions to Bidders, including without limitation those dealing with the disposition of Bid security.

5.03 *Receipt of Addenda*

- A. Bidder hereby acknowledges receipt of the following Addenda:

Addendum Number	Addendum Date

ARTICLE 6—BIDDER’S REPRESENTATIONS AND CERTIFICATIONS

6.01 *Bidder’s Representations*

- A. In submitting this Bid, Bidder represents the following:
 1. Bidder has examined and carefully studied the Bidding Documents, including Addenda.
 2. Bidder has visited the Site, conducted a thorough visual examination of the Site and adjacent areas, and become familiar with the general, local, and Site conditions that may affect cost, progress, and performance of the Work.
 3. Bidder is familiar with all Laws and Regulations that may affect cost, progress, and performance of the Work.
 4. Bidder has carefully studied the reports of explorations and tests of subsurface conditions at or adjacent to the Site and the drawings of physical conditions relating to existing surface or subsurface structures at the Site that have been identified in the Supplementary Conditions, with respect to the Technical Data in such reports and drawings.
 5. Bidder has carefully studied the reports and drawings relating to Hazardous Environmental Conditions, if any, at or adjacent to the Site that have been identified in the Supplementary Conditions, with respect to Technical Data in such reports and drawings.
 6. Bidder has considered the information known to Bidder itself; information commonly known to contractors doing business in the locality of the Site; information and observations obtained from visits to the Site; the Bidding Documents; and the Technical Data identified in the Supplementary Conditions or by definition, with respect to the effect of such information, observations, and Technical Data on (a) the cost, progress, and performance of the Work; (b) the means, methods, techniques, sequences, and procedures of construction to be employed by Bidder, if selected as Contractor; and (c) Bidder’s (Contractor’s) safety precautions and programs.
 7. Based on the information and observations referred to in the preceding paragraph, Bidder agrees that no further examinations, investigations, explorations, tests, studies, or data are necessary for the performance of the Work at the Contract Price, within the Contract Times, and in accordance with the other terms and conditions of the Contract.

8. Bidder is aware of the general nature of work to be performed by Owner and others at the Site that relates to the Work as indicated in the Bidding Documents.
9. Bidder has given Engineer written notice of all conflicts, errors, ambiguities, or discrepancies that Bidder has discovered in the Bidding Documents, and of discrepancies between Site conditions and the Contract Documents, and the written resolution thereof by Engineer is acceptable to Contractor.
10. The Bidding Documents are generally sufficient to indicate and convey understanding of all terms and conditions for performance and furnishing of the Work.
11. The submission of this Bid constitutes an incontrovertible representation by Bidder that without exception the Bid and all prices in the Bid are premised upon performing and furnishing the Work required by the Bidding Documents.

6.02 *Bidder's Certifications*

- A. The Bidder certifies the following:
 1. This Bid is genuine and not made in the interest of or on behalf of any undisclosed individual or entity and is not submitted in conformity with any collusive agreement or rules of any group, association, organization, or corporation.
 2. Bidder has not directly or indirectly induced or solicited any other Bidder to submit a false or sham Bid.
 3. Bidder has not solicited or induced any individual or entity to refrain from bidding.
 4. Bidder has not engaged in corrupt, fraudulent, collusive, or coercive practices in competing for the Contract. For the purposes of this Paragraph 8.02.A:
 - a. Corrupt practice means the offering, giving, receiving, or soliciting of anything of value likely to influence the action of a public official in the bidding process.
 - b. Fraudulent practice means an intentional misrepresentation of facts made (a) to influence the bidding process to the detriment of Owner, (b) to establish bid prices at artificial non-competitive levels, or (c) to deprive Owner of the benefits of free and open competition.
 - c. Collusive practice means a scheme or arrangement between two or more Bidders, with or without the knowledge of Owner, a purpose of which is to establish bid prices at artificial, non-competitive levels.
 - d. Coercive practice means harming or threatening to harm, directly or indirectly, persons or their property to influence their participation in the bidding process or affect the execution of the Contract.
- B. The prices bid herein include sales tax and all other applicable taxes and fees.
- C. The undersigned bidder hereby expressly acknowledges understanding of, and agreement to comply during the performance of any work under any contract resulting from this bid with all equal opportunity obligations as set forth in 41 CFR Part 60:1 and Part 60:4 and 40 CFR Part 8.

WESTSIDE SANITARY SEWER IMPROVEMENTS – PHASE 1
HARRISBURG, SOUTH DAKOTA

BIDDER hereby submits this Bid as set forth above:

Bidder:

(typed or printed name of organization)

By: _____
(individual's signature)

Name: _____
(typed or printed)

Title: _____
(typed or printed)

Date: _____
(typed or printed)

If Bidder is a corporation, a partnership, or a joint venture, attach evidence of authority to sign.

Attest: _____
(individual's signature)

Name: _____
(typed or printed)

Title: _____
(typed or printed)

Date: _____
(typed or printed)

Address for giving notices:

Bidder's Contact:

Name: _____
(typed or printed)

Title: _____
(typed or printed)

Phone: _____

Email: _____

Address: _____

Bidder's Contractor License No.: (if applicable) _____

BID BOND (PENAL SUM FORM)

Bidder Name: Address <i>(principal place of business)</i> :	Surety Name: Address <i>(principal place of business)</i> :
Owner Name: City of Harrisburg Address <i>(principal place of business)</i> : City of Harrisburg 301 E. Willow St Harrisburg, South Dakota 57032	Bid Project <i>(name and location)</i> : Westside Sanitary Sewer Improvements-Phase 1 Harrisburg, SD 57032 BAI# 23453.00 Bid Due Date: September 22, 2022
Bond Penal Sum: Date of Bond:	
Surety and Bidder, intending to be legally bound hereby, subject to the terms set forth in this Bid Bond, do each cause this Bid Bond to be duly executed by an authorized officer, agent, or representative.	
Bidder	Surety
_____ <i>(Full formal name of Bidder)</i>	_____ <i>(Full formal name of Surety) (corporate seal)</i>
By: _____ <i>(Signature)</i>	By: _____ <i>(Signature) (Attach Power of Attorney)</i>
Name: _____ <i>(Printed or typed)</i>	Name: _____ <i>(Printed or typed)</i>
Title: _____	Title: _____
Attest: _____ <i>(Signature)</i>	Attest: _____ <i>(Signature)</i>
Name: _____ <i>(Printed or typed)</i>	Name: _____ <i>(Printed or typed)</i>
Title: _____	Title: _____
<i>Notes: (1) Note: Addresses are to be used for giving any required notice. (2) Provide execution by any additional parties, such as joint venturers, if necessary.</i>	

1. Bidder and Surety, jointly and severally, bind themselves, their heirs, executors, administrators, successors, and assigns to pay to Owner upon default of Bidder the penal sum set forth on the face of this Bond. Payment of the penal sum is the extent of Bidder's and Surety's liability. Recovery of such penal sum under the terms of this Bond will be Owner's sole and exclusive remedy upon default of Bidder.
2. Default of Bidder occurs upon the failure of Bidder to deliver within the time required by the Bidding Documents (or any extension thereof agreed to in writing by Owner) the executed Agreement required by the Bidding Documents and any performance and payment bonds required by the Bidding Documents.
3. This obligation will be null and void if:
 - 3.1. Owner accepts Bidder's Bid and Bidder delivers within the time required by the Bidding Documents (or any extension thereof agreed to in writing by Owner) the executed Agreement required by the Bidding Documents and any performance and payment bonds required by the Bidding Documents, or
 - 3.2. All Bids are rejected by Owner, or
 - 3.3. Owner fails to issue a Notice of Award to Bidder within the time specified in the Bidding Documents (or any extension thereof agreed to in writing by Bidder and, if applicable, consented to by Surety when required by Paragraph 5 hereof).
4. Payment under this Bond will be due and payable upon default of Bidder and within 30 calendar days after receipt by Bidder and Surety of written notice of default from Owner, which notice will be given with reasonable promptness, identifying this Bond and the Project and including a statement of the amount due.
5. Surety waives notice of any and all defenses based on or arising out of any time extension to issue Notice of Award agreed to in writing by Owner and Bidder, provided that the total time for issuing Notice of Award including extensions does not in the aggregate exceed 120 days from the Bid due date without Surety's written consent.
6. No suit or action will be commenced under this Bond prior to 30 calendar days after the notice of default required in Paragraph 4 above is received by Bidder and Surety, and in no case later than one year after the Bid due date.
7. Any suit or action under this Bond will be commenced only in a court of competent jurisdiction located in the state in which the Project is located.
8. Notices required hereunder must be in writing and sent to Bidder and Surety at their respective addresses shown on the face of this Bond. Such notices may be sent by personal delivery, commercial courier, or by United States Postal Service registered or certified mail, return receipt requested, postage pre-paid, and will be deemed to be effective upon receipt by the party concerned.
9. Surety shall cause to be attached to this Bond a current and effective Power of Attorney evidencing the authority of the officer, agent, or representative who executed this Bond on behalf of Surety to execute, seal, and deliver such Bond and bind the Surety thereby.
10. This Bond is intended to conform to all applicable statutory requirements. Any applicable requirement of any applicable statute that has been omitted from this Bond will be deemed to be included herein as if set forth at length. If any provision of this Bond conflicts with any applicable statute, then the provision of said statute governs and the remainder of this Bond that is not in conflict therewith continues in full force and effect.
11. The term "Bid" as used herein includes a Bid, offer, or proposal as applicable.

DBE SUBCONTRACTOR SOLICITATION INFORMATION					
PROJECT NAME:					
Subcontractor Name and Telephone Number	MBE or WBE	Description of Work Offered	Date of Phone Follow-up & Person Contacted	Amount of Bid or Reason for not Quoting	Bid Accepted or Rejected? Include Reason for Rejection

This information is true and correct to the best of my knowledge

Contractor Name, Address and Telephone Number

This form shall be submitted as part of the contractor's bid.

Signature Title Date

CERTIFICATION REGARDING DEBARMENT, SUSPENSION, AND OTHER RESPONSIBILITY MATTERS

A. INSTRUCTIONS

Under Executive Order 12549, an individual or organization debarred or excluded from participation in Federal assistance or benefit programs may not receive any assistance award under a Federal program, or a sub-agreement thereunder for \$25,000 or more. The status of prospective individuals or organizations can be checked at:

<http://epls.arnet.gov/>

Accordingly, each prospective recipient of an EPA grant, loan, or cooperative agreement and any contract or sub-agreement participant thereunder must complete the attached certification or provide an explanation why they cannot complete the certification. For further details, see 40 CFR 32.510, Participants Responsibilities.

B. WHERE TO SUBMIT

A prospective prime contractor must submit a completed certification or explanation to the project owner for the project. Each prospective subcontractor must submit a completed certification or explanation to the prime contractor for the project.

C. HOW TO OBTAIN FORMS

This form may be reproduced as necessary. If needed, additional forms may be obtained from the Department of Environment and Natural Resources.

United States Environmental Protection Agency
Washington, DC 20460

**Certification Regarding
Debarment, Suspension, and Other Responsibility Matters**

The prospective participant certifies to the best of its knowledge and belief that it and its principals:

- (a) Are not presently debarred, suspended, proposed for debarment, declared ineligible, or voluntarily excluded from covered transactions by any Federal department or agency;
- (b) Have not within a three year period preceding this proposal been convicted of or had a civil judgement rendered against them for commission of fraud or a criminal offense in connection with obtaining, attempting to obtain, or performing a public (Federal, State, or local) transaction or contract under a public transaction; violation of Federal or State antitrust statutes or commission of embezzlement, theft, forgery, bribery, falsification or destruction of records, making false statements, or receiving stolen property;
- (c) Are not presently indicted for or otherwise criminally or civilly charged by a government entity (Federal, State, or local) with commission of any of the offenses enumerated in paragraph (1)(b) of this certification; and
- (d) Have not within a three-year period preceding this application/proposal had one or more public transactions (Federal, State, or local) terminated for cause or default.

I understand that a false statement on this certification may be grounds for rejection of this proposal or termination of the award. In addition, under 18 USC Sec. 1001, a false statement may result in a fine of up to \$10,000 or imprisonment for up to 5 years, or both.

Typed Name & Title of Authorized Representative

Signature of Authorized Representative

Date

_____ I am unable to certify to the above statements. My explanation is attached.

AMERICAN IRON AND STEEL CERTIFICATION

1. Identification of American-made Iron and Steel: Consistent with the terms of the Borrower's bid solicitation and the provisions of the Consolidated Appropriations Act of 2014 ("Omnibus Spending Bill"), Section 436, the Bidder certifies that this bid reflects the Bidder's best, good faith to identify domestic sources of iron and steel for all iron and steel products contained in the bid solicitation where such American-made products are available on the schedule and consistent with the deadlines prescribed in or required by the bid solicitation.
2. Verification of U.S. Production: The Bidder certifies that all iron and steel products contained in the bid solicitation that are American-made have been so identified, and if this bid is accepted, the Bidder agrees that it will provide reasonable, sufficient, and timely verification to the Borrower of the U.S. production of each iron and steel product so identified through the completion of the step certification process.
3. The Bidder is responsible for submitting certified product information to the assistance recipient. Utilization of the step certification process is strongly encouraged. This process requires that each handler (supplier, fabricator, manufacturer, processor, etc.) of the iron and steel products certifies that their step in the process was domestically performed and provides a letter of certification from each supplier/fabricator on transfer of intermediate product. Step certification creates a paper trail which documents the location of the manufacturing process involved with the production of steel and iron materials. An example certification letter can be found in Appendix 5 of the American Iron and Steel Provisions in the SRF General Conditions.
4. The American Iron and Steel provision applies in a manner consistent with United States obligations under international agreements. Typically, these obligations only apply to direct procurement by the entities that are signatory to such agreements. State Revolving Fund assistance recipients are not signatories to such agreements, so these agreements have no impact on the American Iron and Steel provision. Claims from suppliers that the American Iron and Steel provision does not apply to certain products based on the International Trade Agreement exemptions of the Consolidated Appropriations Act of 2014 will not be accepted.
5. Documentation Regarding Non-American-made Iron or Steel: The Bidder certifies that for any iron and steel product that is not American-made and is so identified in this bid, the Bidders has included in or attached to this bid the following, as applicable:
 - a. Identification of and citation to a national waiver published by the U.S. Environmental Protection Agency on the official public Internet Web site of the Environmental Protection Agency that is applicable to such iron and steel product, and an analysis that supports its applicability to the iron and steel product;
 - b. Verifiable documentation sufficient to the Borrower that the waiver request process has been initiated. The assistance recipient may receive a waiver at any point before, during, or after the bid process, if one or more of three conditions is met:
 1. Applying the American Iron and Steel requirements of the Act would be inconsistent with the public interest;

2. Iron and steel products are not produced in the United States in sufficient and reasonably available quantities and of a satisfactory quality; or
3. Inclusion of iron and steel products produced in the United States will increase the cost of the overall project by more than 25 percent.

A checklist detailing the types of information required for a waiver to be processed can be found in Appendix 1 of the American Iron and Steel Provisions of the SRF General Conditions. Until a waiver is granted by EPA, the AIS requirements stand.

Bidder/Contractor

Date

Signature of Contractor/Title

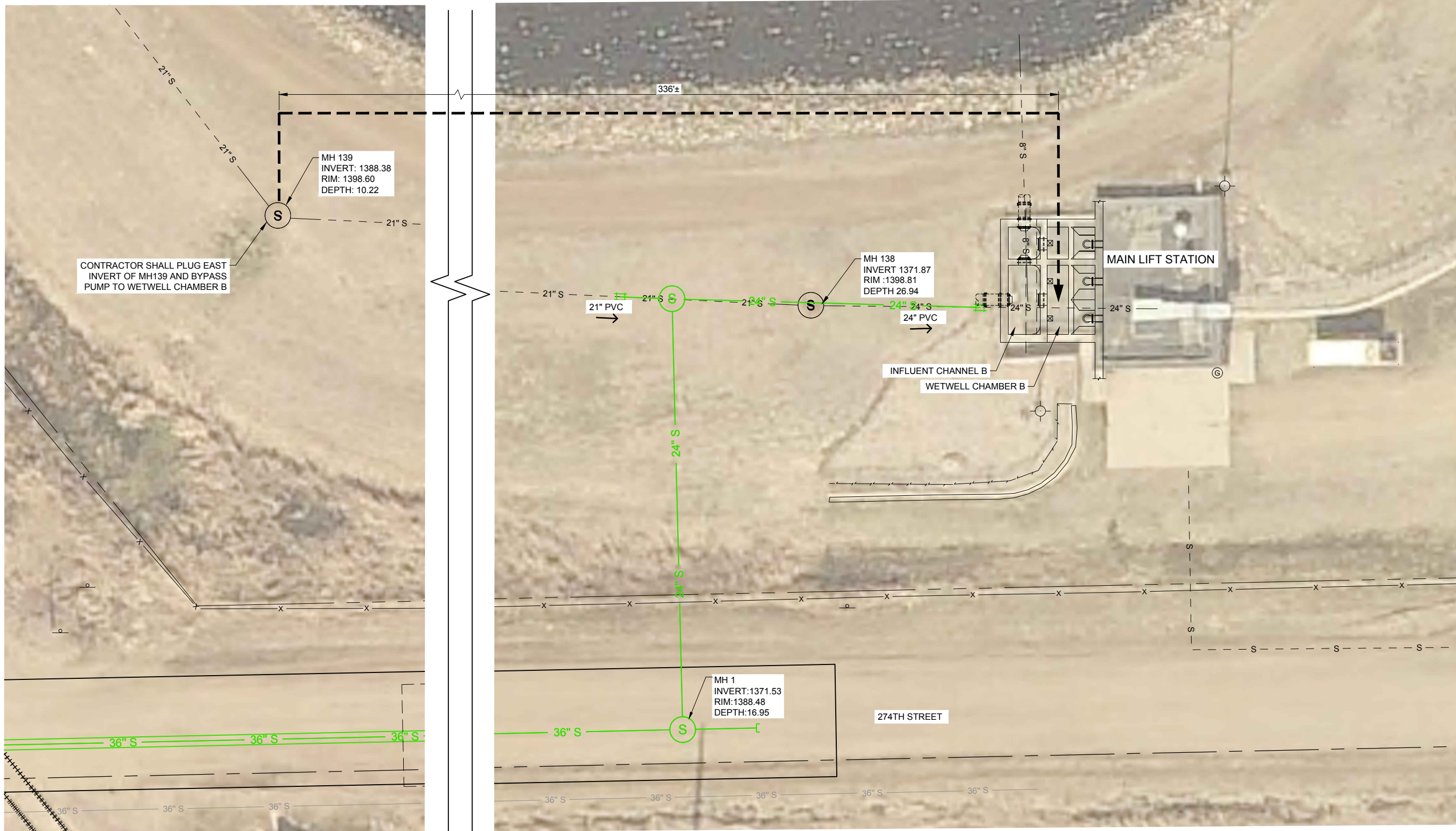
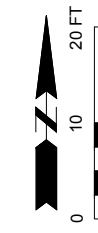
GENERAL BYPASS NOTES:

1. SANITARY SEWER BYPASS REQUIRED FOR TIE-IN UPSTREAM OF MAIN LIFT STATION. CONTRACTOR SHALL USE UPSTREAM MANHOLE ON SEWER PIPING BEING BYPASSED. CONTRACTOR TO DIRECT BYPASS TO WETWELL CHAMBER B AND PROVIDE TEMPORARY GRATING TO PREVENT FALL HAZARDS AROUND BYPASS PIPE. CONTRACTOR TO DEVELOP AND SUBMIT BYPASS PUMPING PLAN PER GENERAL NOTES.
2. IF NO FLOW METER DATA EXISTS FOR THE PIPES REQUIRING BYPASS, THE CONTRACTOR SHALL FIELD MEASURE THE DEPTH OF FLOW IN THE PIPE AND CORRELATE IT TO A CAPACITY USING THE TABLE IN THE GENERAL NOTES.
3. CONTRACTOR TO SEAL MANHOLES OPENED FOR USE AS SUCTION OR DISCHARGE POINTS TO PREVENT ODORS FROM ESCAPING. SECURE MANHOLES WITH FENCING.
4. CONTRACTOR IS RESPONSIBLE FOR COORDINATION AND COMPLETION OF WORK DURING NORMAL OR LOW FLOWS. CONTRACTOR TO TAKE PRECAUTIONS AS NECESSARY TO ACCOUNT FOR HIGH OR PEAK FLOW EVENTS.
5. BEFORE RETURNING FLOW TO NEWLY INSTALLED PIPE AND MANHOLES, ENGINEER SHALL VERIFY ALL TESTING REQUIREMENTS AND TELEVISION HAS BEEN COMPLETED.
6. HISTORICAL PUMPING RECORDS FOR THE MAIN LIFT STATION FOR YEARS 2020 TO 2021 ARE PROVIDED BELOW. DUE TO GROWTH AND CONTINUED DEVELOPMENT WITHIN HARRISBURG, CURRENT FLOWS ARE EXPECTED TO BE HIGHER THAN THIS:

YEAR	AVERAGE DAY FLOW (GPM)	PEAK HOUR FLOW (GPM)
2020	203,809	562,137
2021	193,530	401,931

LEGEND:

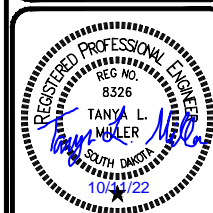
- S --- EXISTING SANITARY SEWER PIPE
- (S) EXISTING SANITARY MANHOLE
- 24" S — PROPOSED SANITARY SEWER (SIZE VARIES)
- (S) PROPOSED SANITARY MANHOLE
- FLOW DIRECTION
- → BYPASS PUMPING



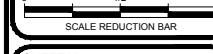
F:\23453-00\Design Phase\CADD\Sheet File\ - BYPASS PLANS.dwg; 10/8/2022 6:05 PM

**WESTSIDE SANITARY SEWER EXTENSION - PHASE 1
BYPASS PLAN MAIN LIFT STATION**

REV.	DATE	DESCRIPTION
1	10/5/22	BYPASS ROUTE REVISED TO MH 139

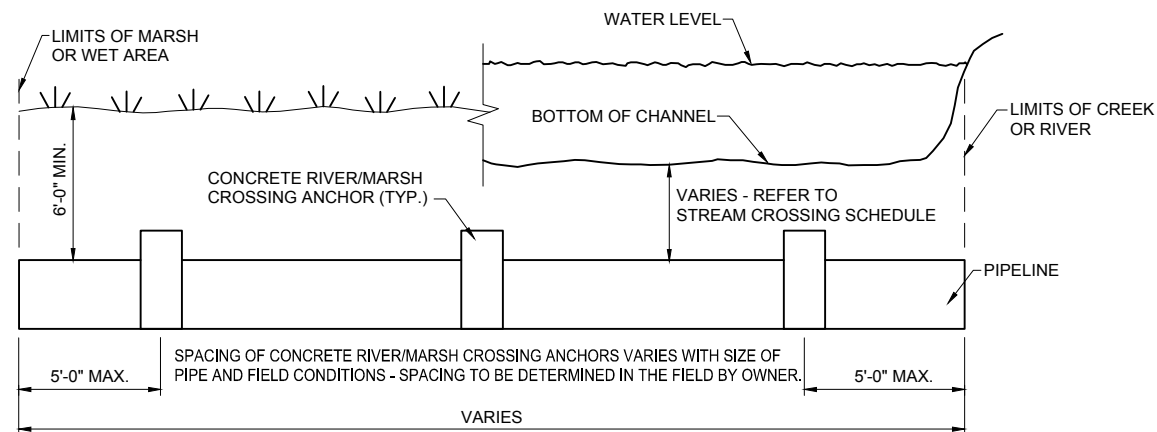


JOB No.:	23453.00
DATE:	SEPTEMBER 2022
ENG / ARCH:	TLM
DESIGNER:	ASW
TECHNICIAN:	CKM



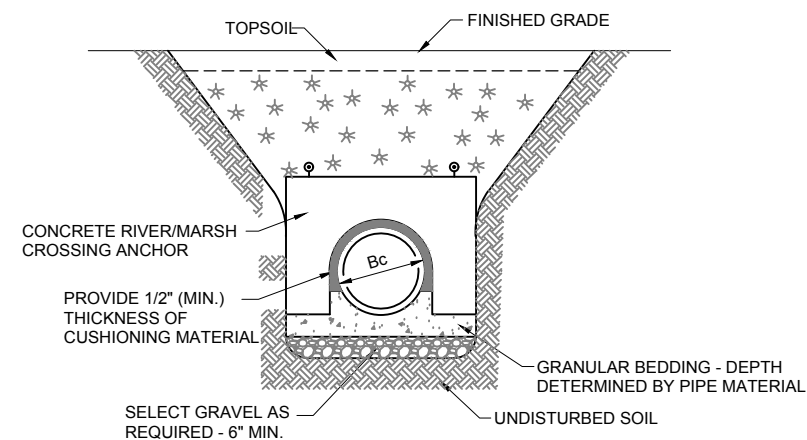
SHEET No. : **I-27R**





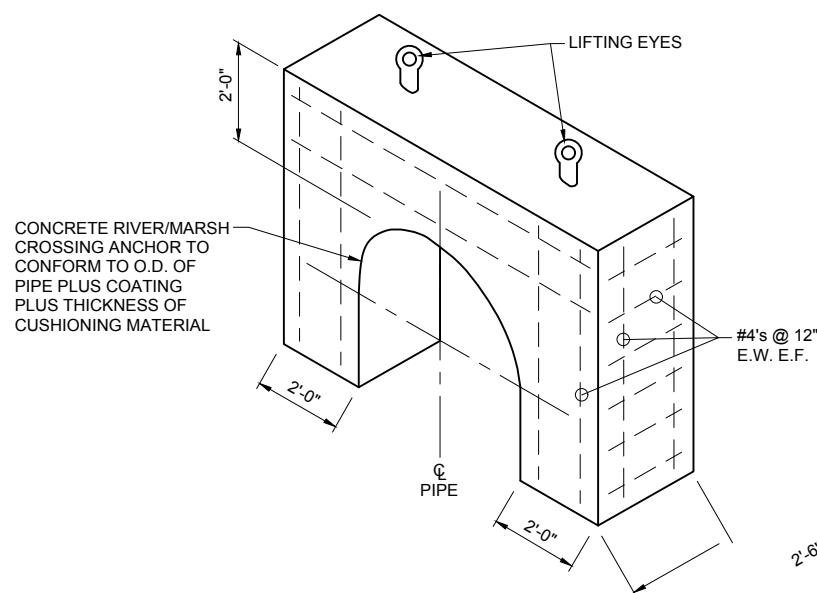
RIVER/MARSH CROSSING CROSS SECTION

SCALE: NONE



CONCRETE RIVER/MARSH CROSSING ANCHOR BEDDING AND TRENCH SECTION

SCALE: NONE

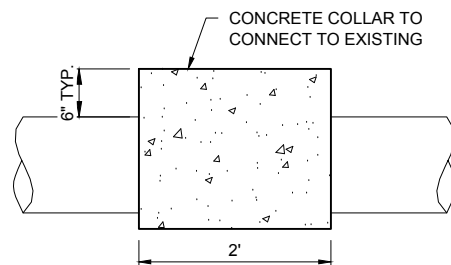


NOTES:

1. BASE OF CONCRETE RIVER/MARSH CROSSING ANCHOR SHALL MATCH INVERT ELEVATION OF PIPE.
2. EXTEND CUSHIONING MATERIAL 18" (MIN.) EACH SIDE, LONGITUDINALLY, OF CONCRETE RIVER/MARSH CONCRETE ANCHOR. CONTRACTOR SHALL TAKE ALL NECESSARY PRECAUTIONS TO MAKE SURE CONCRETE RIVER/MARSH CROSSING ANCHOR DOES NOT COME IN CONTACT WITH THE SIDES OF THE PIPE AND IS INSULATED FROM PIPE BY THE CUSHIONING MATERIAL. CUSHIONING MATERIAL SHALL BE TERRA SHIELD ROCKSHIELD TS-500 AS MANUFACTURED BY THE TAPECOAT COMPANY OR OWNER APPROVED EQUAL. CONTRACTOR SHALL REPAIR ALL DAMAGE TO PIPE COATING, AS DETAILED IN THE SPECIFICATIONS.
3. THIS DETAIL SHALL APPLY IN AREAS WITH A HIGH WATER TABLE, MARSH, RIVER, CANAL AND LATERAL CROSSINGS.
4. CONCRETE RIVER/MARSH CROSSING ANCHORS SHALL BE PRECAST.

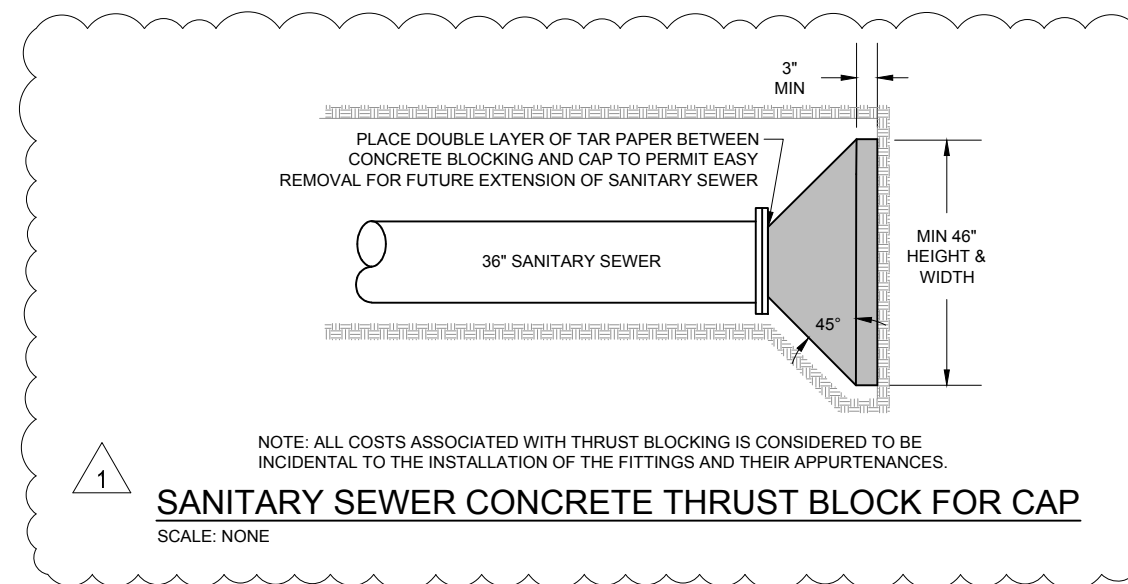
CONCRETE RIVER/MARSH CROSSING ANCHOR ISOMETRIC

SCALE: NONE



CONCRETE COLLAR DETAIL

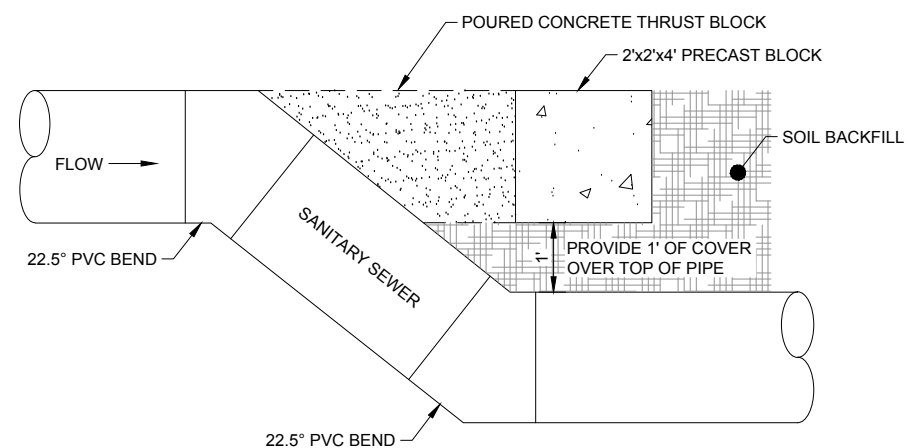
SCALE: NONE



1

SANITARY SEWER CONCRETE THRUST BLOCK FOR CAP

SCALE: NONE



NOTE: ALL COSTS ASSOCIATED WITH THRUST BLOCKING IS CONSIDERED TO BE INCIDENTAL TO THE INSTALLATION OF THE FITTINGS AND THEIR APPURTENANCES

SANITARY SEWER THRUST BLOCK DETAIL

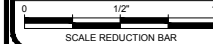
SCALE: NONE

F:\23453-00\Design Phase\CADD\Sheet File\N- DETAILS.dwg;10/8/2022 6:02 PM

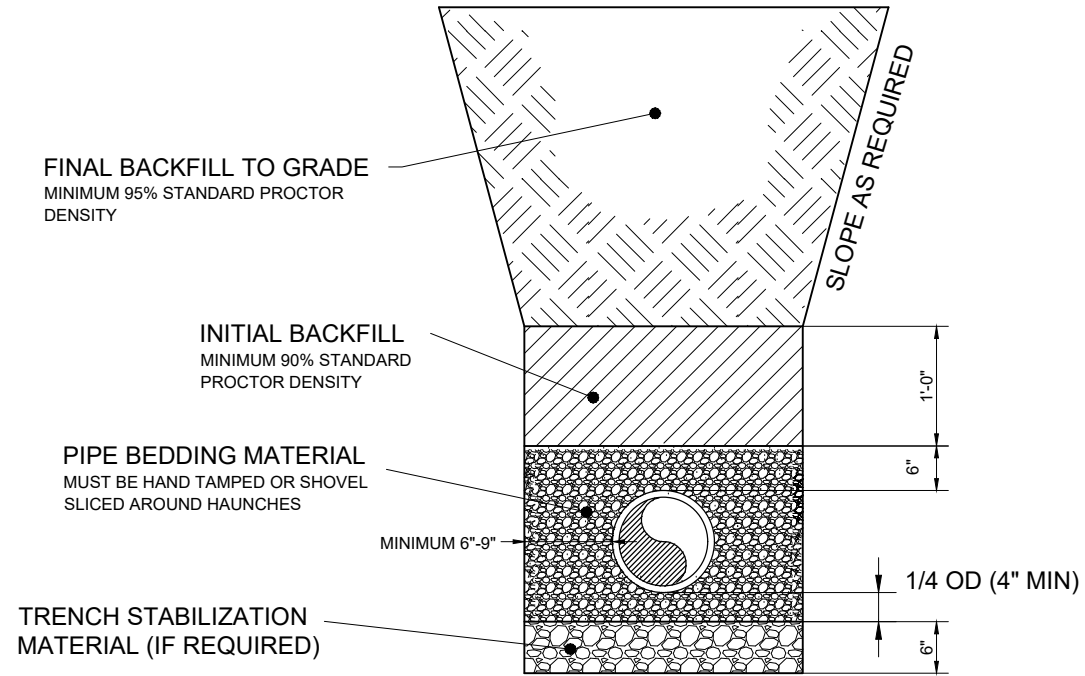
REV.	DATE	DESCRIPTION
1	10/5/22	ADDED DETAIL



JOB No.:	23453.00
DATE:	SEPTEMBER 2022
ENG / ARCH:	ASW
DESIGNER:	ASW
TECHNICIAN:	CKM



F:\23453-00\Design Phase\CADD\Sheet File\N- DETAILS.dwg;10/12/2022 9:27 AM



NOTES:

1. BEDDING MATERIAL SHALL BE CLEAN ANGULAR, WELL-GRADED, CRUSHED ROCK.
95% PASSING 3/4" SIEVE
95% RETAINED #4 SIEVE
2. THE REQUIRED BEDDING MATERIAL UNDER THE BOTTOM OF THE PIPE SHALL BE INSTALLED PRIOR TO PIPE INSTALLATION
3. TRENCH STABILIZATION MATERIAL WILL BE REQUIRED IF SOFT, SPONGY, UNSTABLE OR OTHER SIMILAR MATERIAL IS ENCOUNTERED WHERE THE PIPE IS TO BE PLACED. SPECIFICATIONS AS PER MANUFACTURER'S RECOMMENDATIONS AND A.S.T.M. C12. ENGINEER SHALL DETERMINE IN THE FIELD IF NECESSARY.

HOBAS PIPE BEDDING AND BACKFILL REQUIREMENTS

SCALE: NONE

PROJECT / SHEET TITLE: WESTSIDE SANITARY SEWER EXTENSION - PHASE 1

PROJECT DETAILS

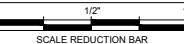
HARRISBURG, SOUTH DAKOTA

DESCRIPTION

REV. DATE



JOB No.: 23453.00
DATE: SEPTEMBER 2022
ENG / ARCH: ASW
DESIGNER: ASW
TECHNICIAN: CKM



SHEET No.: N-20R