

## ADDENDUM | No. 1

PROJECT	<b>Madison Service Line – Segment 2/3A between Crooks and Colton, South Dakota</b>		
BID DATE	2:00 P.M.	Local Time - Central	April 26, 2022
BID LOCATION	Lewis & Clark Regional Water System Office 46986 Monty Street, Tea, SD 57064		
ISSUE DATE	4-19-22		
NOTICE	Failure to acknowledge all addenda in the BID may cause rejection of the BID. See Instructions to Bidders.		

### SCOPE OF THIS ADDENDUM

The following becomes a part of the original project manual and drawings, taking precedence over the items that may conflict. The bidder shall note receipt and make acknowledgment of the Addendum on his/her bid form, incorporating its provision in his/her bid.

### PROJECT MANUAL

The following additions, changes and clarifications have been made to the Project Manual.

#### Section 00415 – Bid Item Descriptions,

DELETE the following paragraph on page 00415-8 that reads:

“Item No. 125 – Work in Narrowed Easement Area (Sta. 425+00 to 435+20): This item includes all Work in Narrowed Easement Area, ROW from Station 425+00 to 435+20, only and will be paid regardless of temporary easement status. This Bid item shall be paid at the Contract lump sum unit price, installed, and accepted – see below.

And ADD the following paragraph in its place:

“Item No. 125 – Work in Narrowed Easement Area (Sta. 426+11 to 428+18): This item includes all Work in Narrowed Easement Area, ROW from Station 426+11 to 428+18, only and will be paid regardless of temporary easement status. This Bid item shall be paid at the Contract lump sum unit price, installed, and accepted – see below.

This paragraph is being revised to include the correct stations.



#### **Section 00415 – Bid Item Descriptions,**

ADD the following paragraph to the Bid Item Descriptions:

“Item No. 126.1 – Work in Narrowed Easement Area (Sta. 824+65 to 825+77): This item includes all Work in Narrowed Easement Area, ROW from Station 824+65 to 825+77, only and will be paid regardless of temporary easement status. This Bid Item shall be paid at the Contract lump sum unit price, installed, and accepted – see below.”

This paragraph is being added to describe a new bid item.

#### **Section 00415 – Bid Item Descriptions,**

DELETE the following paragraph on page 00415-9 that reads:

“Item Nos. 124, 125, 126, 127 & 128 – Work in Narrowed Easement Area: Payment shall be full compensation for furnishing all tools, labor, materials including all trench boxes to reduce excavation width, sheeting and/or shoring, alternative construction techniques and all other work not specifically required or included under other Bid items in accordance with the Drawings and Specifications. Includes all coordination/work with and around the existing utilities. The pipe, appurtenances and granular bedding, reclamation and reseeding and other items will be paid for under the appropriate bid items.”

And ADD the following paragraph in its place:

“Item Nos. 124, 125, 126, 126.1, 127 & 128 – Work in Narrowed Easement Area: Payment shall be full compensation for furnishing all tools, labor, materials including all trench boxes to reduce excavation width, sheeting and/or shoring, alternative construction techniques and all other work not specifically required or included under other Bid items in accordance with the Drawings and Specifications. Includes all coordination/work with and around the existing utilities. The pipe, appurtenances and granular bedding, reclamation and reseeding and other items will be paid for under the appropriate bid items.”

This paragraph is being revised to include the added bid item.

#### **Section 00420 – Bid Schedule,**

DELETE Section 00420 – Bid Schedule in its entirety and REPLACE with the attached 00420-Bid Schedule.

This Section has been revised to correct Stations for Bid Item 125 and add and include - Bid Item 126.1 Work in Narrowed Easement Area (Sta. 824+65 to Sta.825+77).



## DRAWINGS

The following additions, changes and clarifications have been made to the Drawings.

### Drawing Sheet 24.

DELETE the previous Sheet 24 dated 3-28-22, and REPLACE with the attached Sheet 24, Rev. No. 1 dated 4-19-22 in its place.

This drawing sheet has been added to indicate the additional note.

### Drawing Sheet 47.

DELETE the previous Sheet 47 dated 3-28-22, and REPLACE with the attached Sheet 47, Rev. No. 1 dated 4-19-22 in its place.

This drawing sheet has been added to correct misspelled word.

### Drawing Sheet 48.

DELETE the previous Sheet 48 dated 3-28-22, and REPLACE with the attached Sheet 48, Rev. No. 1 dated 4-19-22 in its place.

This drawing sheet has been added to call out narrowed easement.

### Drawing Sheet 62.

DELETE the previous Sheet 62 dated 3-28-22, and REPLACE with the attached Sheet 62, Rev. No. 1 dated 4-19-22 in its place.

This drawing sheet has been added to revise stations of the air relief.

### Drawing Sheet 65.

DELETE the previous Sheet 65 dated 3-28-22, and REPLACE with the attached Sheet 65, Rev. No. 1 dated 4-19-22 in its place.

This drawing sheet has been added to call out narrowed easement.

### Drawing Sheet 87.

DELETE the previous Sheet 87 dated 3-28-22, and REPLACE with the attached Sheet 87, Rev. No. 1 dated 4-19-22 in its place.

This drawing sheet has been added to remove the empty table.

## NOTE

The Plan Holders List and Addendums are available on our website at <http://www.bannerassociates.com> by clicking on **View Bid Information / Project Name / Project Information** link.



Project Manual and Drawing inquiries regarding the Work should be directed to:

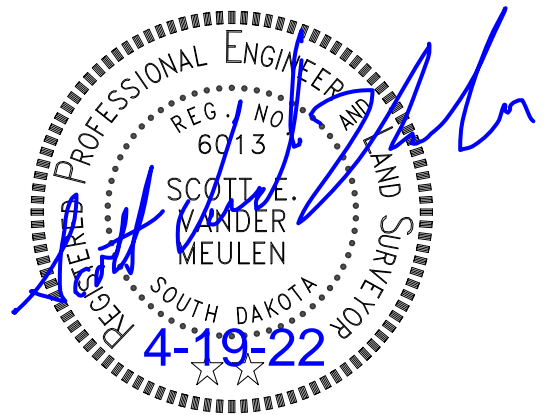
## CONTACT PERSON(S)

Banner Associates, Inc.	Tel 1-605-692-6342   Toll Free 1-855-323-6342   Fax 1-605-692-5714
Scott Vander Meulen	Project Manager scottvm@bannerassociates.com

RUSTNOT	Tel 1-208-384-9752   Cell 1-208-867-5814   Fax
Bill Spickelmire	Cathodic Protection bspickelmire@rustnotconsulting.com

## ATTACHMENTS

1. Section 00420 – Bid Schedule
2. Drawing Sheets 24, 47, 48, 62, 65, 87



Scott Vander Meulen, PE, LS #6013

**SECTION 00420 - BID SCHEDULE**  
**BASE BID AND BID ALTERNATES 1 & 2**

PROJECT IDENTIFICATION:

Madison Service Line - Segment 2/3A  
Between Crooks & Colton, SD

THIS BID IS SUBMITTED TO:

Lewis & Clark Regional Water System  
46986 Monty Street  
Tea, SD 57064

The Bid for this project is structured as a Base Bid and two Bid Alternates. The Base Bid includes all bid items not related to the pipe material. The two Bid Alternates are related to pipe material:

- Bid Alternate 1 (Add) is for Ductile Iron Pipe and Fittings.
- Bid Alternate 2 (Add) is for PVC Pipe and Ductile Iron Fittings.

Bidders must submit a Bid on a unit price basis for the Base Bid. Bidder has the option to submit a Bid for Alternate 1, Alternate 2, or both. Bidder must also include a separate price for either, or both alternates described in the Bid Schedule. The price for the alternate will be the amount added to the Base Bid for the alternate the Owner selects. If the Bidder elects to not furnish pricing for such optional Alternate, then Bidder may enter the words "No Bid" or "Not Applicable."

Bid Schedule (Base Bid)					
Item No.	Description	Unit	Estimated Quantity	Bid Unit Price	Bid Price
101	Mobilization, Bonds, Insurance	LS	Lot		
102	Project Signs	LS	Lot		
105	Granular Bedding	CY	55,700		
106	Select Gravel	CY	2,650		
107	Manual Air Relief Assembly	Each	56		
108	Blow-off Assembly	Each	30		
109	16-inch Isolation Valve Direct Bury	Each	9		
110	Permanent Pig Launch Assembly	Each	1		
111	Temporary Pig Launch Assembly	Each	1		
112	Pigging and Flushing	LS	Lot		
113	Hydrostatic Testing	LS	Lot		
114	Cleaning and Disinfection	LS	Lot		
115	Reclamation and Reseeding	Acre	130		
116	Tree Removal	Each	85		
117	Tree Replacement	Each	170		
120	Buoyancy Restraint Trench	LF	150		

Bid Schedule (Base Bid)					
Item No.	Description	Unit	Estimated Quantity	Bid Unit Price	Bid Price
121	Temporary Fence	LS	Lot		
122	Remove and Reinstall Permanent ROW Fence	LS	Lot		
123	Wetland Area, Drainage and Stream Crossings (Rivers, Creeks, Unnamed Drainages and Ditches)	LS	Lot		
124	Work in Narrowed Easement Area (Sta. 364+00 to Sta. 370+00)	LS	Lot		
125	Work in Narrowed Easement Area (Sta. 426+11 to Sta. 428+18)	LS	Lot		
126	Work in Narrowed Easement Area (Sta. 591+00 to Sta. 596+00)	LS	Lot		
126.1	Work in Narrowed Easement Area (Sta. 824+65 to Sta. 825+77)	LS	Lot		
127	Work in Narrowed Easement Area (Sta. 856+00 to Sta. 861+00)	LS	Lot		
128	Work in Narrowed Easement Area (Sta. 1056+70 to Sta. 1067+00)	LS	Lot		
130	Erosion Control Blanket	SY	12,350		
131	Erosion Bales	Each	70		
132	Linear Erosion Control Silt Fence or Bio-Roll	LF	8,380		
133	Silt Fence Cleaning and Sediment Removal	LF	670		
134	Temporary Vehicle Tracking Control	Each	5		
135	Crushed Base for Roadway	Ton	3,250		
136	Construct or Widen Field Entrance	Each	2		
137	18-Inch CMP Culvert Pipe	LF	45		
138	18-Inch CMP Flared End Sections	Each	2		
139	Riprap	CY	100		
140	Traffic Control	LS	Lot		
141	Flagging	Hour	40		
142	Rock Excavation and Blasting	CY	50		
144	Relocate Existing Small Diameter Rural Watermain – less than 4-inch diameter	LF	1,500		

Bid Schedule (Base Bid)					
Item No.	Description	Unit	Estimated Quantity	Bid Unit Price	Bid Price
145	Relocate Existing Small Diameter Rural Watermain – 4-inch diameter up to and including 6-inch diameter	LF	1,500		
146	Relocate Existing Small Diameter Rural Watermain – 8-inch diameter up to and including 10-inch diameter	LF	1,000		
147	Remove and Reset Small Diameter Drain Tile (Trench Crossings) – 6-inch diameter up to and including 8-inch diameter	LF	400		
148	Remove and Reset Small Diameter Drain Tile (Parallel Runs) – 6-inch diameter up to and including 8-inch diameter	LF	2,500		
149	Remove and Reset Small Diameter Drain Tile (Trench Crossings) – 10-inch diameter up to and including 12-inch diameter	LF	300		
150	Remove and Reset Small Diameter Drain Tile (Parallel Runs) – 10-inch diameter up to and including 12-inch diameter	LF	1,750		
160	Force Account Work	FA	Lot	\$50,000.00	\$50,000.00
300	6-inch PVC Pipe - C900 DR18 (payable by MCWC)	LF	170		
301	Horizontal Directional Drilled 6-inch PVC Pipe C900 DR 18 Yelomine PVC (payable by MCWC)	LF	1,455		
302	Connection to MCWC at Skunk Creek (payable by MCWC)	LS	Lot		

<b>Bid Schedule (Base Bid)</b> <b>Madison Service Line – Segment 2/3A</b> <b>Total of All Unit Price Bid Items</b>	
--	--

### BID ALTERNATE 1 (ADD) - 16" DIAMETER DUCTILE IRON MAIN LINE PIPE

**16" DUCTILE IRON PIPE:** Bid Alternate 1 includes Class 250 ductile iron pipe as the material for the main line pipeline. Bid Alternate 1 must include pipe surface preparation and application of an exterior coating system to the ductile iron pipe by pipe manufacturer at the pipe plant or at pipe manufacturer's factory with:

1. Zinc coated ductile iron pipe in accordance with AWWA C151 and ISO 8179 for buried ductile iron pipe with an intact enhanced polyethylene encasement layer of 8-mil (200 µm) V-Bio™ film in accordance with AWWA C105, Section 09958 – Polyethylene Encasement, and Section 09959 – Zinc Coated Ductile Iron Pipe of the Specifications.
2. Bore pipe can be either ductile iron pipe or fusible PVC pipe. If the bore pipe is ductile iron pipe, bore pipe external coatings must be extruded polyolefin per Section 09953 with specialized bore type heat shrink sleeves per Section 09954 of the Specifications.
3. If the bore pipe is ductile iron, three cathodic protection installations are required. If the bore pipe is PVC, because of the different ductile iron sections being apart, four cathodic protection installations are required.

Bid Schedule - Bid Alternate 1 (Add) 16" Diameter Ductile Iron Main Line Pipe					
Item No.	Description	Unit	Estimated Quantity	Bid Unit Price	Bid Price
103	16-inch Ductile Iron Pipe – Class 250 with coating system	LF	81,300		
104	Horizontal Directional Drilled 16-inch Fusible PVC Pipe, C900 DR 18 or Class 250 Ductile Iron Pipe with coating system	LF	3,450		
118	Cathodic Protection Test Stations – all types	Each	61		
119	Impressed Current Cathodic Protection System	LS	Lot		
129	Highway/Railroad Crossing 24-inch Steel Encasement Pipe - Jacked	LF	830		
143	Connection to L&C Madison Segment 1	LS	Lot		
170	Spare Parts Pipe Material Inventory Set	LS	Lot		
400	Lump Sum Add or Deduct	LS	Lot		

<b>Bid Schedule - Bid Alternate 1 (Add) – Ductile Iron Pipe</b> <b>Madison Service Line – Segment 2/3A</b> <b>Total of All Unit Price Bid Items</b>	
---	--



**BID ALTERNATE 2 (ADD) - 16" DIAMETER PVC MAIN LINE PIPE**

**16" PVC PIPE:** Bid Alternate 2 includes C900 DR18 and DR21 PVC pipe as the material for the main line pipeline.

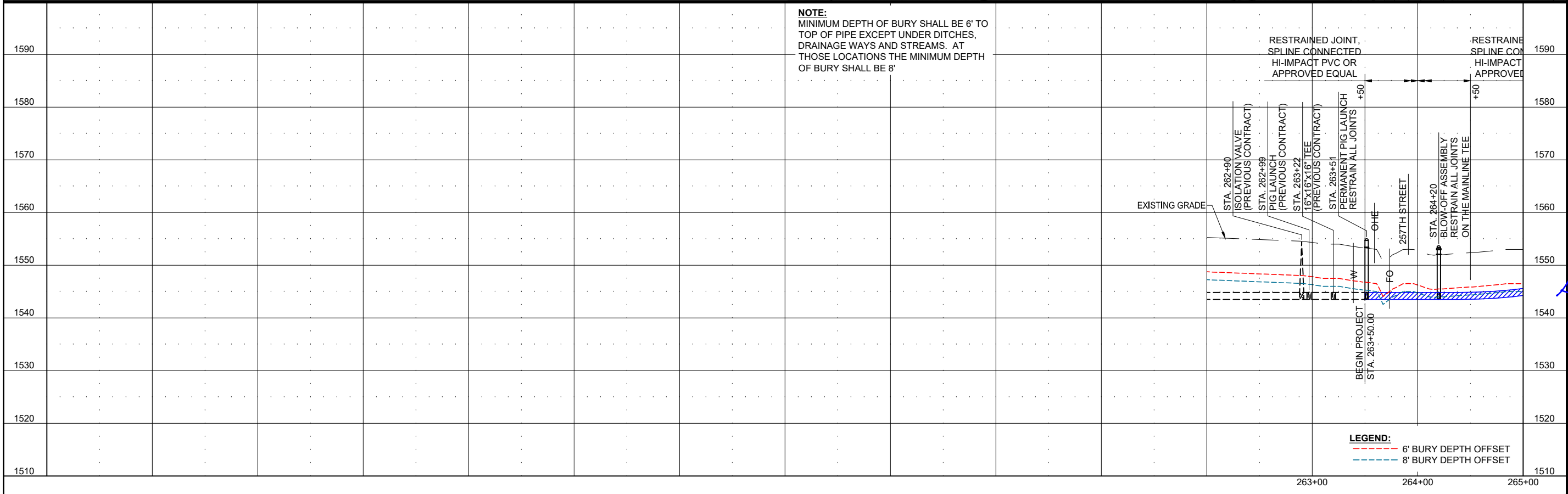
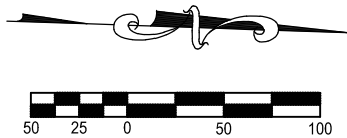
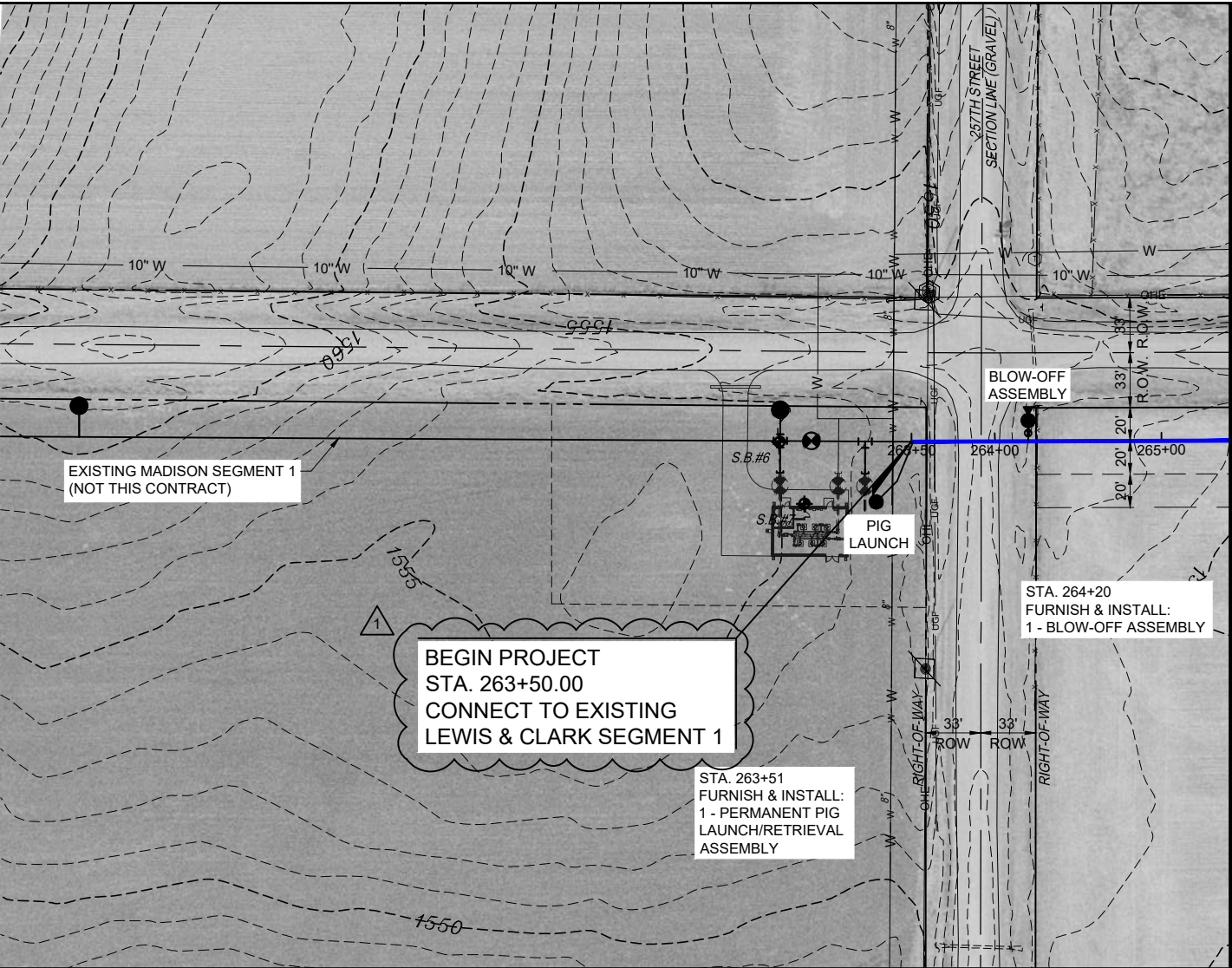
<b>Bid Schedule - Bid Alternate 2 (Add) 16" Diameter PVC Main Line Pipe</b>					
Item No.	Description	Unit	Estimated Quantity	Bid Unit Price	Bid Price
203.1	16-inch PVC Pipe – C900 DR18	LF	65,494		
203.2	16-inch PVC Pipe – C900 DR21	LF	15,806		
204	Horizontal Directional Drilled 16-inch Fusible PVC Pipe, C900 DR 18	LF	3,450		
218	Cathodic Protection Test Stations – all types	Each	67		
219	Impressed Current Cathodic Protection System				
229	Highway/Railroad Crossing 24-inch Steel Encasement Pipe - Jacked	LF	830		
243	Connection to L&C Madison Segment 1	LS	Lot		
270	Spare Parts Pipe Material Inventory Set	LS	Lot		
400	Lump Sum Add or Deduct	LS	Lot		

<b>Bid Schedule - Bid Alternate 2 (Add) – PVC Pipe Madison Service Line – Segment 2/3A Total of All Unit Price Bid Items</b>	
--	--

END OF SECTION

[Page intentionally blank]

**NOTE:**  
CONTRACTOR SHALL EXPOSE ALL UTILITIES A MINIMUM OF TWO WEEKS PRIOR TO CROSSING TO CONFIRM TYPE, SIZE, LOCATION, ELEVATION AND TO COORDINATE CROSSING. INCIDENTAL TO PIPELINE INSTALLATION.



**BANNER**  
engineering a better community  
www.bannerassociates.com - Toll Free: 1.855.323.6342

PROJECT / SHEET TITLE:

LEWIS & CLARK REGIONAL WATER SYSTEM  
PLAN & PROFILE - STA. 262+00 TO 264+00  
TREATED WATER PIPELINE - MADISON SERVICE LINE SEGMENT 2 / 3A

REV.	DATE	DESCRIPTION
1	4-19-22	ADDENDUM No. 1

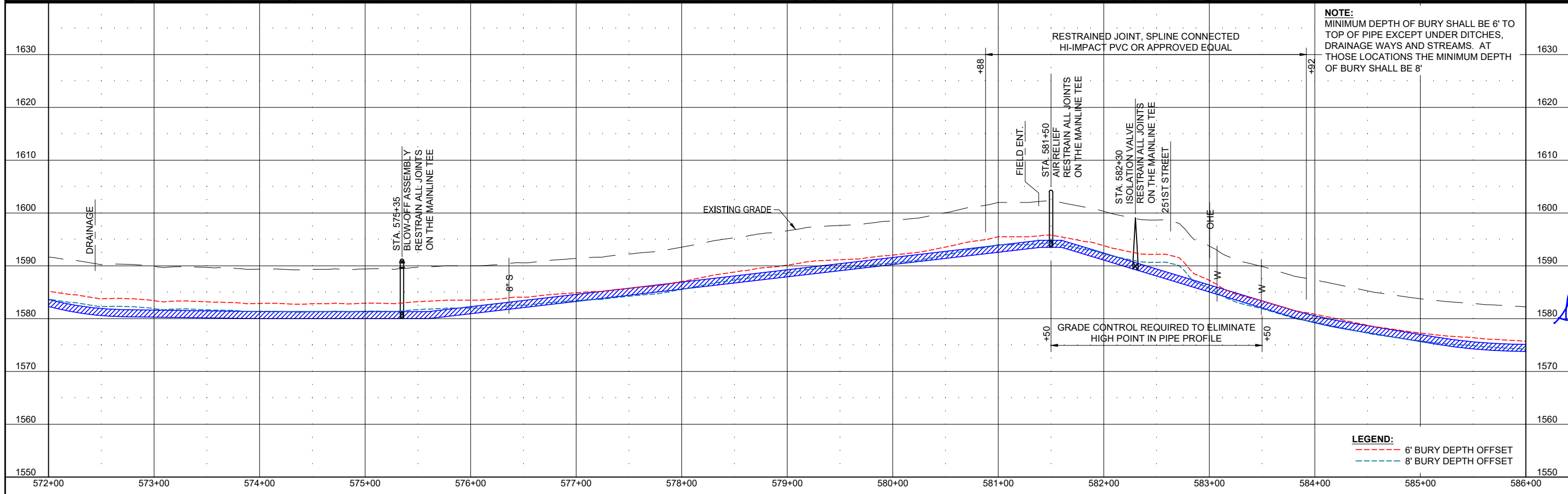
SCOTT E. VANDER MEULEN  
REGISTERED PROFESSIONAL ENGINEER  
SOUTH DAKOTA  
4-19-22

JOB No.: 20000.25.01  
DATE: FEBRUARY, 2022  
DESIGNED BY: S.V.M.  
CHECKED BY: T.R.C.  
DRAWN BY: S.A.N.

SCALE REDUCTION BAR  
0 1/2" 1"

SHEET No.: 24

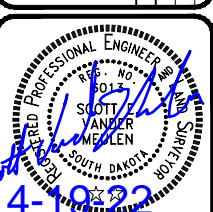


The logo for Banner Associates features the word "BANNER" in a large, bold, dark blue sans-serif font. A stylized orange and yellow swoosh graphic cuts through the letters. Below the company name, the tagline "engineering a better community" is written in a smaller, lowercase sans-serif font. At the bottom of the logo, the website "www.bannerassociates.com" and the toll-free number "1.855.323.6342" are listed.

**BANNER**  
engineering a better community  
www.bannerassociates.com - Toll Free: 1.855.323.6342

LEWIS & CLARK REGIONAL WATER SYSTEM  
PLAN & PROFILE - STA. 572+00 TO 586+00

REV.	DATE	DESCRIPTION
1	4-19-22	ADDENDUM No. 1



JOB No.:	20000.25.01
DATE:	FEBRUARY, 2022
DESIGNED BY:	S.V.M.
CHECKED BY:	T.R.C.
DRAWN BY:	S.A.N.

0 1/2" 1"

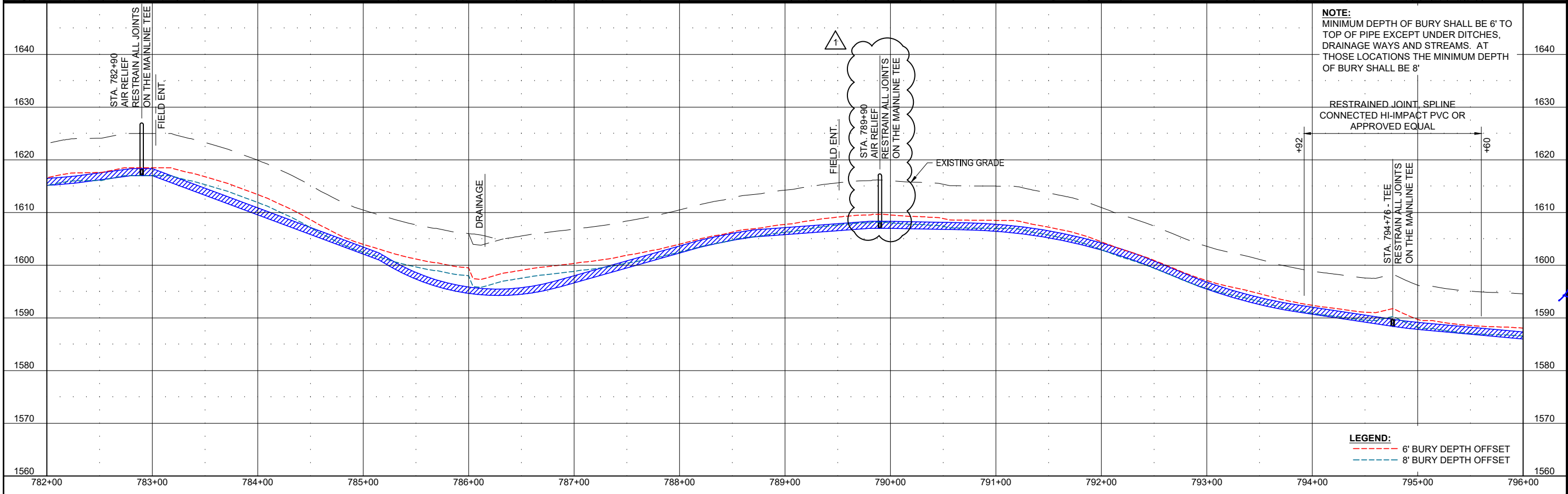
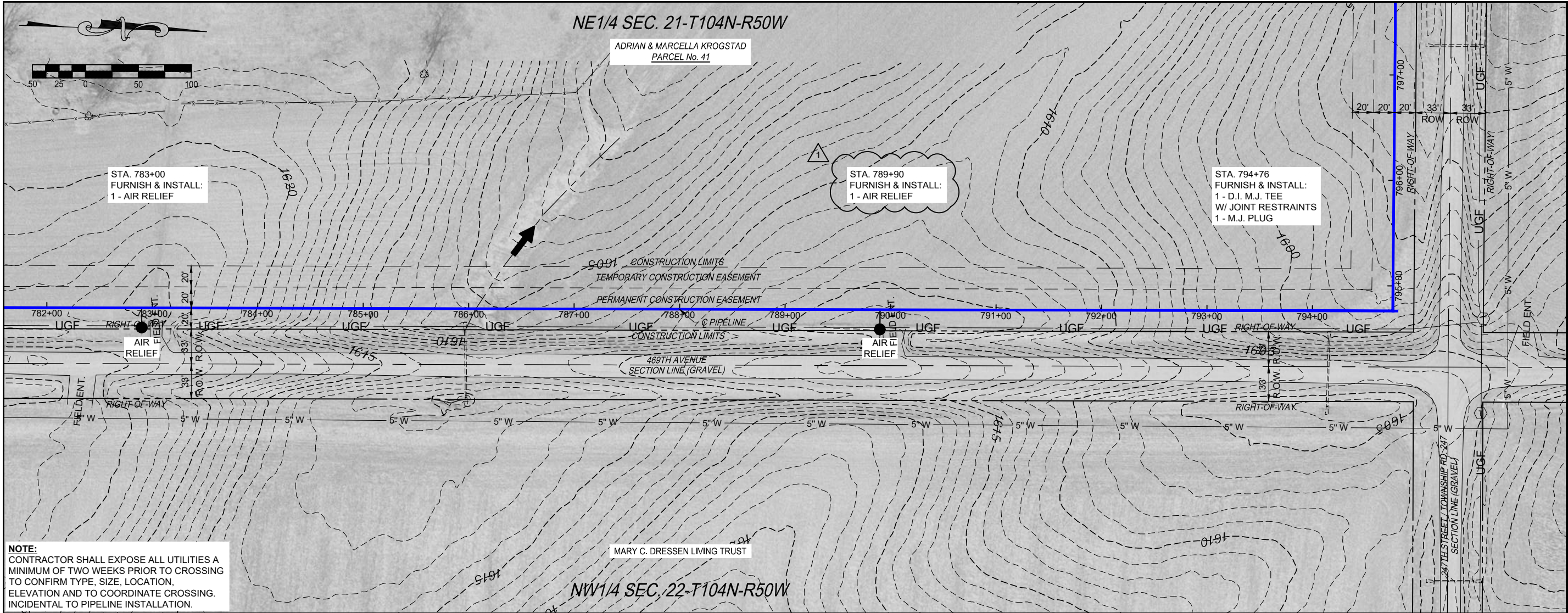
SCALE REDUCTION BAR

SHEET No. : 47

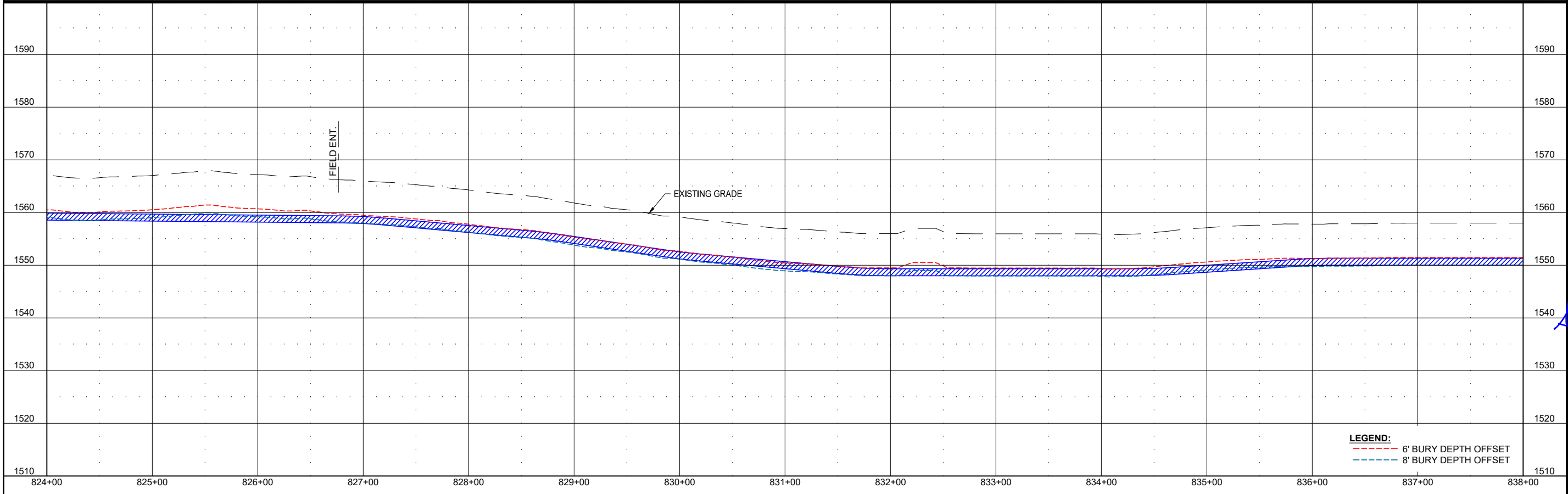
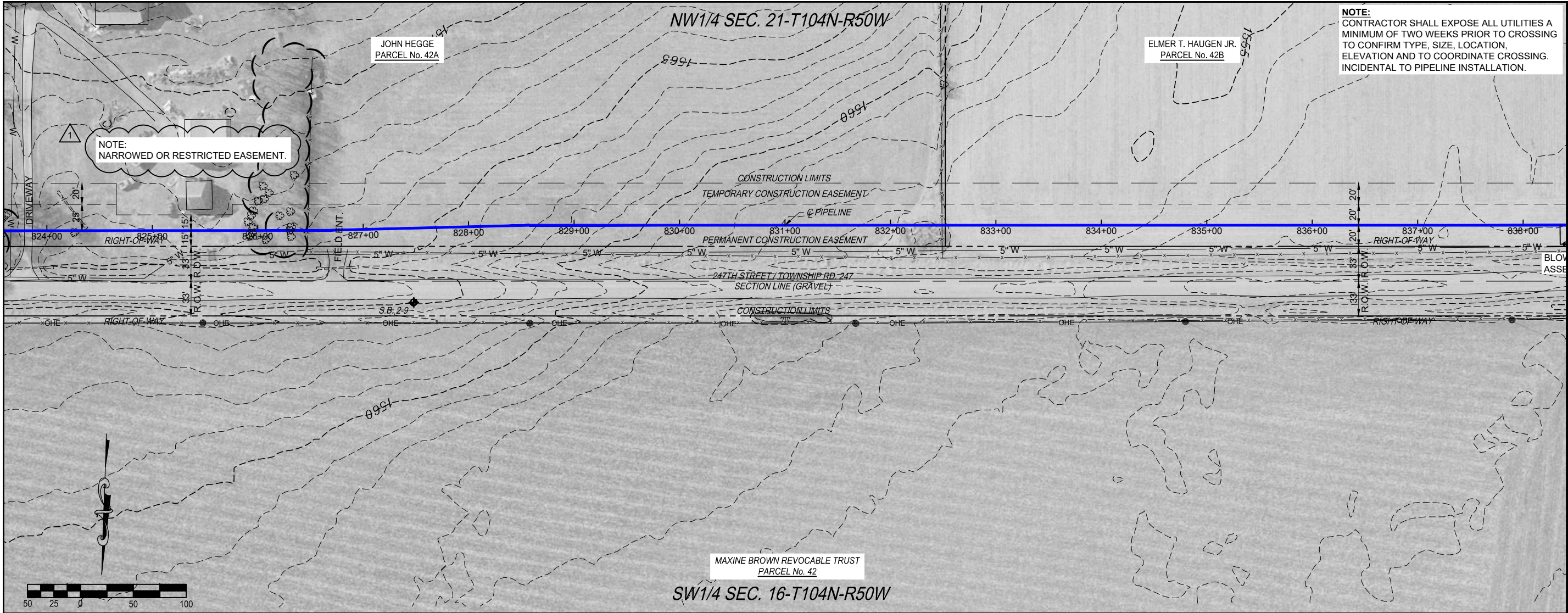












LEGEND:  
- - - 6' BURY DEPTH OFFSET  
- - - 8' BURY DEPTH OFFSET

**BANNER**  
engineering a better community  
www.bannerassociates.com - Toll Free: 1.855.323.6342

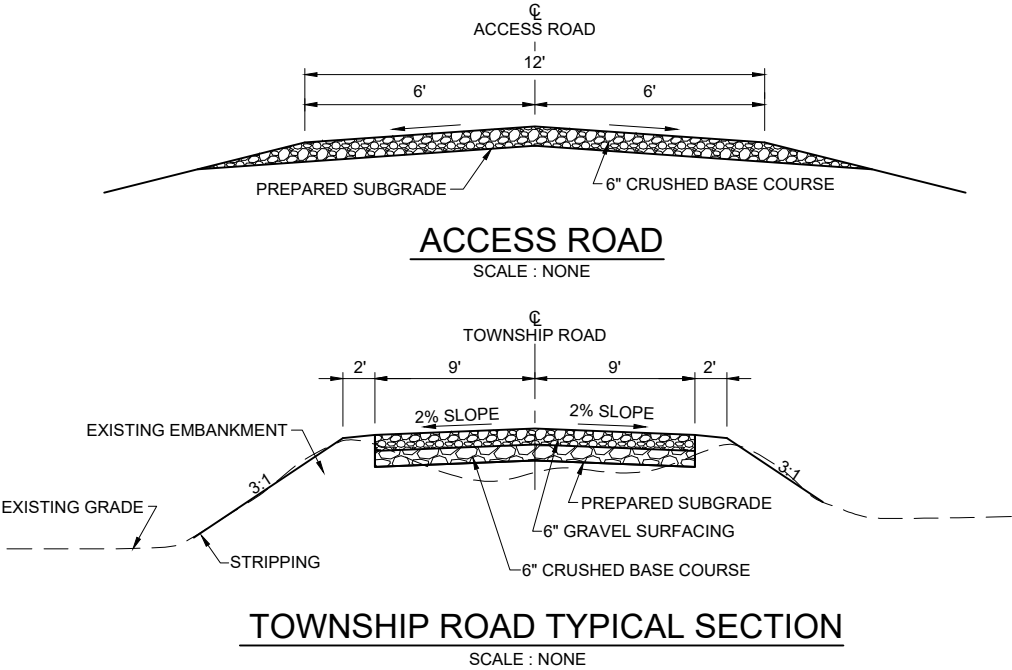
PROJECT / SHEET TITLE:	
LEWIS & CLARK REGIONAL WATER SYSTEM	
PLAN & PROFILE - STA. 824+00 TO 838+00	
TREATED WATER PIPELINE - MADISON SERVICE LINE SEGMENT 2 / 3A	
REV.	DATE
1	4-19-22
ADDENDUM No. 1	

4-19-22

JOB No.: 20000.25.01  
DATE: FEBRUARY, 2022  
DESIGNED BY: S.V.M.  
CHECKED BY: T.R.C.  
DRAWN BY: S.A.N.

SCALE REDUCTION BAR  
0 1/2" 1"

SHEET No.: 65



- NOTE:**
1. CONTRACTOR SHALL USE A TRENCH BOX OR SHORING IN CONSTRICTED CONSTRUCTION AREAS AND AREAS WHERE OBSTRUCTIONS PREVENT THE USE OF SLOPING SIDEWALL TRENCH AS WELL AS AREAS WHERE TRENCH CONDITIONS REQUIRE ITS USE. CONSTRUCTION ACCESS POINTS ARE LIMITED. SEE ALSO GENERAL MAINTENANCE OF TRAFFIC NOTES ON TRAFFIC CONTROL SHEETS.
  2. CONTRACTOR SHALL CONFINE WORK WITHIN CONSTRUCTION EASEMENT OR USE SHORING OR TRENCH BOX TO CONFINE WORK WITHIN THE CONSTRUCTION EASEMENT.
  3. ALL EXCAVATION, TRENCHING, SHORING AND THE LIKE SHALL BE PERFORMED IN A MANNER THAT COMPLIES WITH OCCUPATIONAL HEALTH & SAFETY RULES AND REGULATIONS AND THOSE OF OTHER GOVERNING BODIES HAVING JURISDICTION OVER SAFETY. CONTRACTOR SHALL BE SOLELY RESPONSIBLE FOR MAINTAINING SAFE EXCAVATION AND TRENCH CONDITIONS AND IMPLEMENTING SAFETY PROGRAMS TO PROTECT HIS WORKMEN, OWNER'S PROJECT REPRESENTATIVES AND OTHER AUTHORIZED PERSONNEL.

PROJECT / SHEET TITLE :

LEWIS & CLARK REGIONAL WATER SYSTEM

TYPICAL DETAILS

TREATED WATER PIPELINE - MADISON SERVICE LINE 2 / 3A

REV	DATE	DESCRIPTION
1	4-19-22	ADDENDUM No. 1

REGISTERED PROFESSIONAL ENGINEER

REG. NO. 6813

SCOTT VANDER MEULEN

SUPERVISOR

4-19-22

JOB No.: 20000.25.01

DATE: FEBRUARY, 2022

DESIGNED BY: S.V.M.

CHECKED BY: T.R.C.

DRAWN BY: S.A.N.

0 1/2" 1"

SCALE REDUCTION BAR

SHEET No. :

87