

ADDENDUM | No. 1

PROJECT	South Dakota State Penitentiary Pavement Maintenance Phase 2 - OSE# C1221--13X/SWMR		
BID DATE	2:30 PM	CDT	07/15/2021
BID LOCATION	SD Department of Corrections, Office of State Engineer, Joe Foss Building 523 East Capitol Avenue, Pierre, SD 57501-3182		
ISSUE DATE	July 12, 2021		
NOTICE	Failure to acknowledge all addenda in the BID may cause rejection of the BID. See Instructions to Bidders.		

SCOPE OF THIS ADDENDUM

The following becomes a part of the original project manual and drawings, taking precedence over the items that may conflict. The bidder shall note receipt and make acknowledgment of the Addendum on his/her bid form, incorporating its provision in his/her bid.

PROJECT MANUAL

The following additions, changes and clarifications have been made to the Project Manual.

AGREEMENT FOR CONSTRUCTION – ARTICLE III, DATE OF COMMENCEMENT AND COMPLETION:

Delete: *the Contractor will have NINETY-EIGHT (98) consecutive calendar days to complete the work.*

Add: *the Contractor will have ONE-HUNDRED TWELVE (112) consecutive calendar days to complete the work.*

EXHIBIT “A” BID FORM

Delete: *Exhibit “A” Bid Form*

Add: *Exhibit “A” Bid Form, included with this addendum*

EXHIBIT “A-1” MODIFICATION TO BID FORM

Delete: *Exhibit “A-1” Modification to Bid Form*

Add: *Exhibit “A-1” Modification to Bid Form, included with this addendum*



DRAWINGS - CIVIL

The following additions, changes and clarifications have been made to the Drawings.

Drawing Sheet F-1

Delete: *Drawing Sheet F-1 in its entirety*

Add: *Drawing Sheet F-1 REV (Move delivery roadway scope to Phase 2, Modify Phase 2 Day Count), included with this addendum*

Drawing Sheet F-2

Delete: *Drawing Sheet F-2 in its entirety.*

Add: *Drawing Sheet F-2 REV (Move delivery roadway scope to Phase 2, Modify Phase 2 Day Count), included with this addendum*

Drawing Sheet J-9

Add Note: *Dowel bars shall be installed in all Transverse Contraction Joints shown on the jointing plan.*

It is estimated that the jointing layout shown will require 1,078 – 1" epoxy coated dowel bars. Payment for all labor, material, and tools to furnish and install the dowel bars and assembly will be made at the contract unit price per each for "Dowel Bar" as stipulated in the bid.

Section N - Project Details and Standard Plates

Add: *SDDOT Standard Plate for "PCC Pavement Dowel Bar Assembly for Transverse Contraction Joints 12 Bar Assembly on Granular Base Material"*

DRAWINGS - ELECTRICAL

The following additions, changes and clarifications have been made to the Drawings.

Drawing Sheet L-1 & L-2

Delete: *Drawing Sheet L-1 and L-2 in its entirety*

Add: *Drawing Sheet L-1 and L-2 included with this addendum*

NOTE

The Plan Holders List and Addendums are available on our website at <http://www.bannerassociates.com> by clicking on **View Bid Information / Project Name / Project Information** link.



Project Manual and Drawing inquiries regarding the work should be directed to:

CONTACT PERSON(S)

Banner Associates, Inc.	Tel 1-605-692-6342	Toll Free 1-855-323-6342	Fax 1-605-692-5714
-------------------------	--------------------	--------------------------	--------------------

Weston Blasius

Project Manager

westonb@bannerassociates.com

Subconsultant	Tel	Fax
---------------	-----	-----

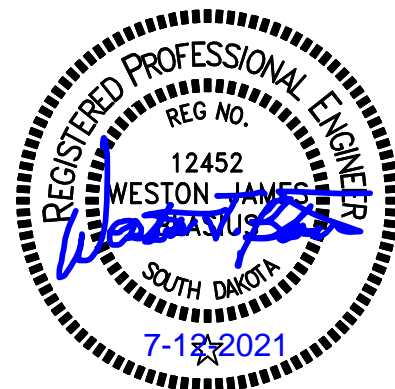
Jonathan Kennedy

Project Manager

jonathan.kennedy@westplainsengineering.com

ATTACHMENTS

1. Exhibit "A" Bid Form
2. Exhibit "A-1" Modification to Bid Form
3. Drawing Sheet F-1 REV
4. Drawing Sheet F-2 REV
5. Drawing Sheet L-1
6. Drawing Sheet L-2
7. Transverse Joint Reinforcement Detail



Weston J. Blasius, PE #12452

EXHIBIT “A”

BID FORM

BID FORM

**Campus Wide Pavement Maint. Ph2
South Dakota State Penitentiary
Sioux Falls, South Dakota
OSE# C1221--13X/SWMR**

Date: July 15, 2021, 2:30 PM CT

To: State Engineer, Office of the State Engineer
Joe Foss Building
523 East Capitol
Pierre, South Dakota 57501

Phone: 605-773-3466

The undersigned, being familiar with the local conditions affecting the work, and with the Contract Documents, including the Invitation to Bid, Instructions to Bidders, Bid Form, Explanation of Alternates, Modification to Bid Form, Bid Bond Form, Performance and Payment Bond, Acknowledgment of Surety, Sample Certification of Surety, Non-Resident Bidder Affidavit, Form of Agreement for Construction, General Conditions, Special Conditions, Technical Specifications, Plans and Addenda which govern the purchase of material and labor and the awarding of contracts hereby proposes to do all the work and provide all the material and equipment which pertains to

Campus Wide Pavement Maint. Ph2, South Dakota State Penitentiary, Sioux Falls, South Dakota

OSE# C1221--13X/SWMR

as provided for in the Plan and accompanying Specifications dated **June 23, 2021**

for the following base bid and alternates:

UNIT PRICES:

For changing quantities of work items from those indicated by the contract drawings upon written instruction from the Architect and State Engineer, the following unit prices shall prevail:

BID ITEM NO	DESCRIPTION	UNITS	TOTAL QUANTITY	UNIT PRICE	TOTAL PRICE
GENERAL					
1	Mobilization	LS	1		
2	Clearing	LS	1		
3	Traffic Control Signs	SF	142		
4	Traffic Control Miscellaneous	LS	1		
5	Type 3 Barricade	EA	8		
6	Locate Utility	EA	32		
LOWER WEST PARKING LOT					
7	Remove Asphalt Concrete Pavement	SY	2085		
8	Remove Concrete Curb and Gutter	LF	78		
9	Remove Concrete Pavement	SY	94		
10	Unclassified Excavation	CY	422		

BID ITEM NO	DESCRIPTION	UNITS	TOTAL QUANTITY	UNIT PRICE	TOTAL PRICE
11	Unclassified Excavation, Digouts	CY	30		
12	Scarify and Recompect Subgrade	SY	2090		
13	Subgrade Foundation Aggregate	TON	60		
14	Adjustment of Valve Box	EA	3		
15	Adjustment of Manhole	EA	1		
16	Adjustment of Inlet	EA	2		
17	Placing Contractor Furnished Topsoil	CY	10		
18	Inlet Sediment Control Device	EA	2		
19	Temporary Vehicle Construction Entrance	EA	1		
20	Manhole Construction Plate Marker	EA	1		
21	Class A Riprap	TON	30		
22	Base Course	TON	941		
23	Asphalt Concrete Composite, PG 58-28	TON	490		
24	6" Nonreinforced PCC Pavement	SY	78		
25	Insert Steel Bar in PCC Pavement	EA	35		
26	Concrete Curb and Gutter	LF	78		
27	15" RCP Class 3, Furnish	LF	59		
28	15" RCP, Install	LF	59		
29	18" RCP Class 3, Furnish	LF	28		
30	18" RCP, Install	LF	28		
31	18" Flared End Section w/ Trash Guard	EA	1		
32	Type B Inlet	EA	2		
33	High Build Waterborne Pavement Marking Paint, 4" Yellow	LF	1288		
34	Seeding	AC	0.1		
35	Lighting	LS	1		
DELIVERY ROAD					
36	Remove Gravel Surfacing	SY	1200		
37	Remove Concrete Pavement	SY	115		
38	Remove Bollard	EA	4		
39	Unclassified Excavation	CY	169		
40	Unclassified Excavation, Digouts	CY	22		
41	Subgrade Foundation Aggregate	TON	45		
42	Extension of Valve Box	EA	1		
43	Adjustment of Inlet	EA	2		
44	Adjustment of Utility Box	EA	2		
45	Placing Contractor Furnished Topsoil	CY	2		
46	Inlet Sediment Control Device	EA	2		
47	Temporary Vehicle Construction Entrance	EA	1		
48	Concrete Washout Area	EA	1		
49	Base Course	TON	390		

BID ITEM NO	DESCRIPTION	UNITS	TOTAL QUANTITY	UNIT PRICE	TOTAL PRICE
50	Geosynthetic Geogrid - TX 5	SY	1332		
51	7" Non-Reinforced PCC Pavement	SY	1137		
52	7" Fast Track Non-Reinforced PCC Pavement	SY	175		
53	7" Reinforced PCC Approach Pavement	SY	20		
54	3" Dia Steel Bollard	EA	2		
55	6" Dia Steel Bollard	EA	2		
56	Area Inlet Frame and Grate Assembly	EA	2		
57	Seeding	AC	0.1		
Add #1	Dowel Bar	EA	1,078		
PERIMETER ROAD					
58	Full Depth Reclamation	SY	3034		
59	Salvage and Stockpile Asphalt Mix and Granular Base Material	SY	3034		
60	Remove Gravel Surfacing	SY	21		
61	Remove Concrete Pavement	SY	13		
62	Remove Bollard	EA	4		
63	Remove, Salvage and Reinstall Delineator Pole	EA	17		
64	Remove Beam Guardrail	LF	528		
65	Unclassified Excavation	CY	405		
66	Unclassified Excavation, Digouts	CY	60		
67	Scarify and Recompect Subgrade	SY	3513		
68	Subgrade Foundation Aggregate	TON	120		
69	Adjustment of Inlet	EA	3		
70	Placing Contractor Furnished Topsoil	CY	50		
71	Erosion Control Blanket	SY	27		
72	Silt Fence	LF	920		
73	Inlet Sediment Control Device	EA	3		
74	6" Dia Erosion Control Wattle	LF	1024		
75	Temporary Vehicle Construction Entrance	EA	2		
76	Base Course	TON	507		
77	Base Course, Salvaged Asphalt Mix	TON	1078		
78	Base Course, Slope Stabilization	SY	876		
79	Asphalt Concrete Composite, PG 58-28	TON	665		
80	Concrete Curb and Gutter (Roll Type)	FT	943		
81	Concrete Fillet Section, 6" Thick	SF	255		
82	1/2" x #4 Crushed Quartzite Cover Aggregate	TON	74		
83	MC-70 Asphalt for Prime	GAL	438		
84	SS-1H or CSS-1H Asphalt for Fog Seal	GAL	263		
85	Straight Class A W Beam Guardrail with Wood Posts	FT	528		
86	Short Radius W Beam Guardrail and Special Anchor Assembly	EA	4		

BID ITEM NO	DESCRIPTION	UNITS	TOTAL QUANTITY	UNIT PRICE	TOTAL PRICE
87	15" RCP Class 3, Furnish	FT	86		
88	15" RCP, Install	FT	86		
89	15" Flared End Section w/ Trash Guard	EA	3		
90	Type B Inlet	EA	3		
91	8" Dia Steel Bollard	EA	4		
92	Seeding	AC	0.1		
TOTAL FOR UNIT PRICE BASE BID =					

The above unit prices shall include all labor, materials, bailing, shoring removal, overhead, profit, insurance, etc., to cover the finished work of the several kinds called for. Changes shall be processed in accordance with Article 14 of the General Conditions.

The Owner also reserves the unrestricted privilege to reject any unit prices for additions to or deductions from the scheduled amount of work as given in the Bid, if the same are considered excessive or unreasonable, or to accept by including the same in the contract as unit prices applicable in the event of addition to or deduction from the work to be performed under the contract, any or all such unit prices which may be considered fair or reasonable.

The above bid includes all applicable State and Municipal Sales and Use Taxes on materials, and State and Municipal Excise Taxes and all other State and Federal Taxes that would affect the amount of the bid. (See Instructions to Bidders-SD Sales and Use Tax Information for Public Contracts.)

In addition, any material furnished by the State for use in this project is subject to Use Tax and Excise Tax. The total taxable value of materials furnished by the State for this project is \$ _____.

A Performance and Payment Bond as required by General Conditions will not be required on contracts which do not exceed Fifty Thousand Dollars (\$50,000). (See SDCL 5-21-1.1 as amended).

If discrepancies remain at the time of substantial completion, a value will be assigned to each of the discrepancies and two (2) times their estimated value will be retained from payment to the Contractor until completed and accepted. (See SDCL 5-18-13 as amended).

Within ten (10) days after Contractor's receipt of the Agreement for Construction, the Contractor shall submit to the Office of the State Engineer, the executed Agreement for Construction, Performance and Payment Bond, Certificates of Insurance and Affirmative Action Plan (if applicable).

Work shall be commenced within ten (10) consecutive calendar days after written Notice to Proceed by the State Engineer and shall be substantially completed October 15, 2021 for Phase 1 and September 16, 2022 for Phase 2 for Phase 1 and September 16, 2022 for Phase 2.

The undersigned acknowledges receipt of the following addenda to the drawings and/or specifications (give number and date of each):

Addenda Nos. _____ dated _____ respectively.

The undersigned acknowledges that they have read and understand the Asbestos-Containing Materials Statement contained in the project manual.

Accompanying this proposal is a certified check, cashier's check or draft in the amount of 5% of the base bid and all add alternates, and drawn on a State or National Bank in the amount of \$ _____ or a 10% bid bond issued by a surety authorized to do business in the State of South Dakota, in the amount of \$ _____. *(Not applicable if Bid is under \$50,000.)*

In submitting this bid, it is understood that the right is reserved by the Owner to reject any and all bids and to waive any irregularities. It is further understood by the Bidder that he may not withdraw his Bid within 30 days after the actual opening thereof.

In submitting this bid, bidder asserts it has reviewed all provisions of the General Conditions including the provision for assessment of liquidated delay damages found in Article 10 of the General Conditions. Bidder agrees that the damages anticipated by the Owner in the event of delay in completion of the project are uncertain in amount and difficult to prove; the amount stipulated in Article III of the Agreement for Construction is a reasonable amount in light of the anticipated loss and injury; and the Owner's actual damages in the event of delay would be impracticable or extremely difficult to fix. Bidder agrees to be bound by the liquidated damages set forth in Article III of the Agreement for Construction. Bidder further agrees that the liquidated amount stipulated in Article III of the Agreement for Construction is not a penalty.

For contractors, vendors, suppliers, or subcontractors with five (5) or more employees who enter into a contract with the State of South Dakota that involves the expenditure of one hundred thousand dollars (\$100,000) or more, by submitting a response to this solicitation or agreeing to contract with the State, the bidder or offeror certifies and agrees that the following information is correct:

The bidder or offeror, in preparing its response or offer or in considering proposals submitted from qualified, potential vendors, suppliers, and subcontractors, or in the solicitation, selection, or commercial treatment of any vendor, supplier, or subcontractor, has not refused to transact business activities, has not terminated business activities, and has not taken other similar actions intended to limit its commercial relations, related to the subject matter of the bid or offer, with a person or entity on the basis of Israeli national origin, or residence or incorporation in Israel or its territories, with the specific intent to accomplish a boycott or divestment of Israel in a discriminatory manner. It is understood and agreed that, if this certification is false, such false certification will constitute grounds for the State to reject the bid or response submitted by the bidder or offeror on this project and terminate any contract awarded based on the bid or response. The successful bidder or offeror further agrees to provide immediate written notice to the contracting executive branch agency if during the term of the contract it no longer complies with this certification and agrees such noncompliance may be grounds for contract termination.

The undersigned further acknowledges that they have read, understand, and agree to the information stated in the Instructions to Bidders.

BIDDER: _____
(Type Name of Firm)

BY: _____
(Signature of Firm's Representative)

(Type Name and Title of Firm's Representative)

TELEPHONE NO. _____

E-MAIL ADDRESS _____

BUSINESS ADDRESS _____

STATE OF INCORPORATION _____

EXHIBIT “A-1”

MODIFICATION TO BID FORM

**MODIFICATION
to Bid Form**

**Campus Wide Pavement Maint. Ph2
South Dakota State Penitentiary
Sioux Falls, South Dakota
OSE# C1221--13X/SWMR**

Date: July 15, 2021, 2:30 PM CT

To: State Engineer, Office of the State Engineer
Joe Foss Building
523 East Capitol
Pierre, South Dakota 57501

Phone: 605-773-3466
Email: OSE.BIDMOD@state.sd.us

Please make the following modifications to our bid on the referenced project. This modification is per the Instructions to Bidders Item #3 included in the original bid documents and modifies our sealed bid.

Note To Bidder: Please circle the appropriate ADD/DEDUCT and "X" out the undesired action.

UNIT PRICES MODIFICATION

Note that blank cells in the below unit prices table are assumed to be a no change to the bid form value.

BID ITEM NO	DESCRIPTION	MODIFICATION	UNIT PRICE	TOTAL PRICE
GENERAL				
1	Mobilization	Add/Deduct		
2	Clearing	Add/Deduct		
3	Traffic Control Signs	Add/Deduct		
4	Traffic Control Miscellaneous	Add/Deduct		
5	Type 3 Barricade	Add/Deduct		
6	Locate Utility	Add/Deduct		
LOWER WEST PARKING LOT				
7	Remove Asphalt Concrete Pavement	Add/Deduct		
8	Remove Concrete Curb and Gutter	Add/Deduct		
9	Remove Concrete Pavement	Add/Deduct		
10	Unclassified Excavation	Add/Deduct		
11	Unclassified Excavation, Digouts	Add/Deduct		
12	Scarify and Recompact Subgrade	Add/Deduct		
13	Subgrade Foundation Aggregate	Add/Deduct		
14	Adjustment of Valve Box	Add/Deduct		
15	Adjustment of Manhole	Add/Deduct		
16	Adjustment of Inlet	Add/Deduct		
17	Placing Contractor Furnished Topsoil	Add/Deduct		
18	Inlet Sediment Control Device	Add/Deduct		
19	Temporary Vehicle Construction Entrance	Add/Deduct		

BID ITEM NO	DESCRIPTION	MODIFICATION	UNIT PRICE	TOTAL PRICE
20	Manhole Construction Plate Marker	Add/Deduct		
21	Class A Riprap	Add/Deduct		
22	Base Course	Add/Deduct		
23	Asphalt Concrete Composite, PG 58-28	Add/Deduct		
24	6" Nonreinforced PCC Pavement	Add/Deduct		
25	Insert Steel Bar in PCC Pavement	Add/Deduct		
26	Concrete Curb and Gutter	Add/Deduct		
27	15" RCP Class 3, Furnish	Add/Deduct		
28	15" RCP, Install	Add/Deduct		
29	18" RCP Class 3, Furnish	Add/Deduct		
30	18" RCP, Install	Add/Deduct		
31	18" Flared End Section w/ Trash Guard	Add/Deduct		
32	Type B Inlet	Add/Deduct		
33	High Build Waterborne Pavement Marking Paint, 4" Yellow	Add/Deduct		
34	Seeding	Add/Deduct		
35	Lighting	Add/Deduct		
DELIVERY ROAD				
36	Remove Gravel Surfacing	Add/Deduct		
37	Remove Concrete Pavement	Add/Deduct		
38	Remove Bollard	Add/Deduct		
39	Unclassified Excavation	Add/Deduct		
40	Unclassified Excavation, Digouts	Add/Deduct		
41	Subgrade Foundation Aggregate	Add/Deduct		
42	Extension of Valve Box	Add/Deduct		
43	Adjustment of Inlet	Add/Deduct		
44	Adjustment of Utility Box	Add/Deduct		
45	Placing Contractor Furnished Topsoil	Add/Deduct		
46	Inlet Sediment Control Device	Add/Deduct		
47	Temporary Vehicle Construction Entrance	Add/Deduct		
48	Concrete Washout Area	Add/Deduct		
49	Base Course	Add/Deduct		
50	Geosynthetic Geogrid - TX 5	Add/Deduct		
51	7" Non-Reinforced PCC Pavement	Add/Deduct		
52	7" Fast Track Non-Reinforced PCC Pavement	Add/Deduct		
53	7" Reinforced PCC Approach Pavement	Add/Deduct		
54	3" Dia Steel Bollard	Add/Deduct		
55	6" Dia Steel Bollard	Add/Deduct		
56	Area Inlet Frame and Grate Assembly	Add/Deduct		
57	Seeding	Add/Deduct		
Add #1	Dowel Bar	Add/Deduct		

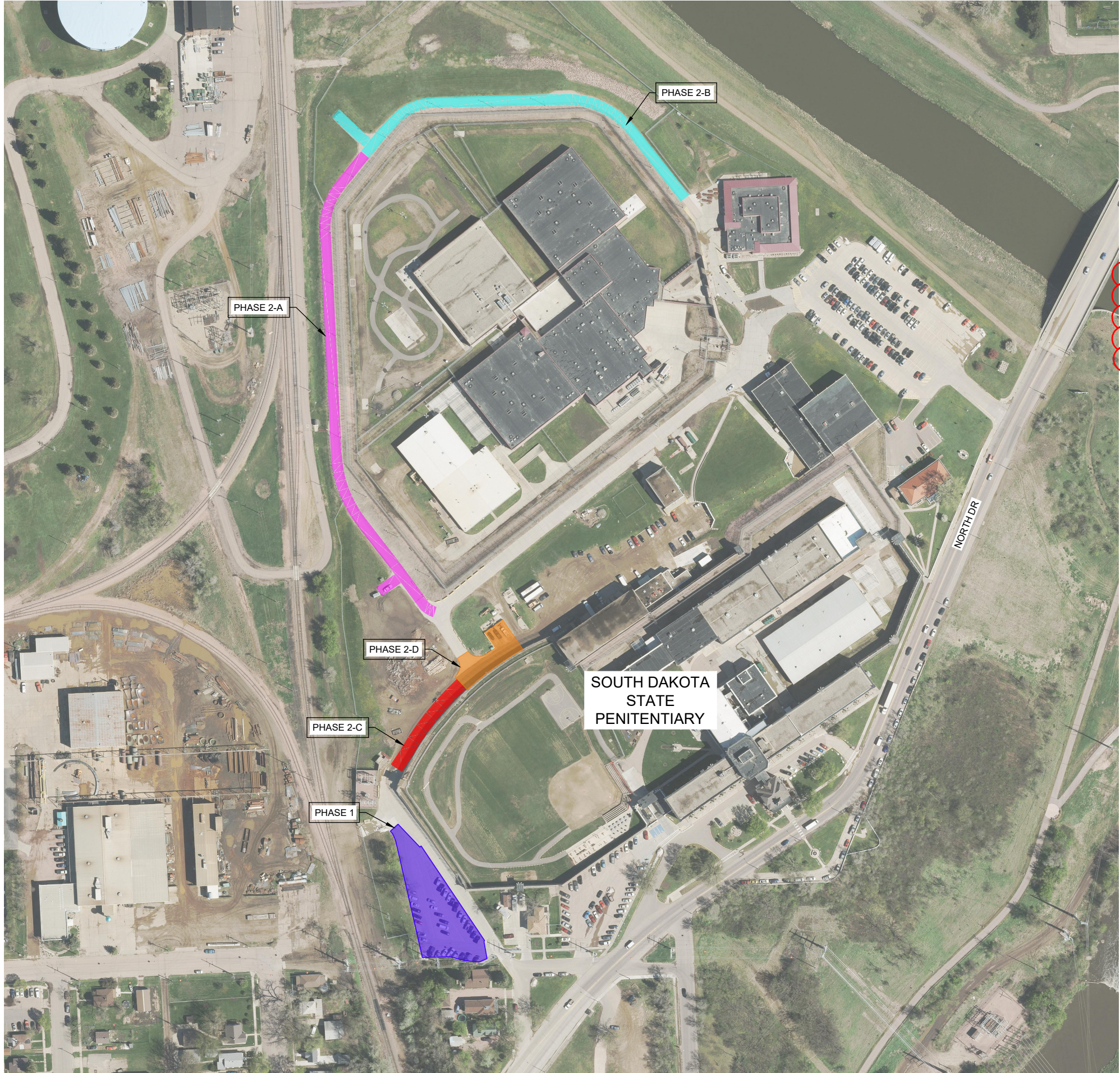
BID ITEM NO	DESCRIPTION	MODIFICATION	UNIT PRICE	TOTAL PRICE
PERIMETER ROAD				
58	Full Depth Reclamation	Add/Deduct		
59	Salvage and Stockpile Asphalt Mix and Granular Base Material	Add/Deduct		
60	Remove Gravel Surfacing	Add/Deduct		
61	Remove Concrete Pavement	Add/Deduct		
62	Remove Bollard	Add/Deduct		
63	Remove, Salvage and Reinstall Delineator Pole	Add/Deduct		
64	Remove Beam Guardrail	Add/Deduct		
65	Unclassified Excavation	Add/Deduct		
66	Unclassified Excavation, Digouts	Add/Deduct		
67	Scarify and Recompact Subgrade	Add/Deduct		
68	Subgrade Foundation Aggregate	Add/Deduct		
69	Adjustment of Inlet	Add/Deduct		
70	Placing Contractor Furnished Topsoil	Add/Deduct		
71	Erosion Control Blanket	Add/Deduct		
72	Silt Fence	Add/Deduct		
73	Inlet Sediment Control Device	Add/Deduct		
74	6" Dia Erosion Control Wattle	Add/Deduct		
75	Temporary Vehicle Construction Entrance	Add/Deduct		
76	Base Course	Add/Deduct		
77	Base Course, Salvaged Asphalt Mix	Add/Deduct		
78	Base Course, Slope Stabilization	Add/Deduct		
79	Asphalt Concrete Composite, PG 58-28	Add/Deduct		
80	Concrete Curb and Gutter (Roll Type)	Add/Deduct		
81	Concrete Fillet Section, 6" Thick	Add/Deduct		
82	1/2" x #4 Crushed Quartzite Cover Aggregate	Add/Deduct		
83	MC-70 Asphalt for Prime	Add/Deduct		
84	SS-1H or CSS-1H Asphalt for Fog Seal	Add/Deduct		
85	Straight Class A W Beam Guardrail with Wood Posts	Add/Deduct		
86	Short Radius W Beam Guardrail and Special Anchor Assembly	Add/Deduct		
87	15" RCP Class 3, Furnish	Add/Deduct		
88	15" RCP, Install	Add/Deduct		
89	15" Flared End Section w/ Trash Guard	Add/Deduct		
90	Type B Inlet	Add/Deduct		
91	8" Dia Steel Bollard	Add/Deduct		
92	Seeding	Add/Deduct		
TOTAL MODIFICATION TO BASE BID =		Add/Deduct		

The undersigned acknowledges receipt of the following addenda to the drawings and/or specifications (give number and date of each):

Addenda Nos. _____ dated _____ respectively.

In submitting this modification to bid, it is understood that the right is reserved by the Owner to reject any and all bids and to waive any irregularities. It is further understood by the Bidder that he may not withdraw his Bid within 30 days after the actual opening thereof.

BIDDER: _____ (Type Name of Firm)
BY: _____ (Signature of Firm's Representative)
_____ (Type Name and Title of Firm's Representative)
TELEPHONE NO. _____
E-MAIL ADDRESS _____
BUSINESS ADDRESS _____ _____
STATE OF INCORPORATION _____



PROJECT PHASING LEGEND

- PHASE 1 (2021 CONSTRUCTION)
- PHASE 2-A (2022 CONSTRUCTION)
- PHASE 2-B (2022 CONSTRUCTION)
- PHASE 2-C (2022CONSTRUCTION)
- PHASE 2-D (2022 CONSTRUCTION)

PHASING CHANGE -
ADDENDUM NO. 1

PROJECT / SHEET TITLE: SD STATE PEN - CAMPUS WIDE PAVEMENT MAINTENANCE PHASE 2

PHASING PLAN

OSE #C1221-13X/SWMR SIOUX FALLS, SOUTH DAKOTA

DESCRIPTION

REV. DATE



JOB No.: 22539.01
DATE: JUNE 2021
ENG / ARCH: WJB
DESIGNER: WJB
TECHNICIAN: CKM

SCALE REDUCTION BAR

SHEET No. : F-1 REV

TRAFFIC CONTROL NOTES

SEQUENCE OF OPERATIONS

THE FOLLOWING SEQUENCE OF OPERATION SHALL BE FOLLOWED BY THE CONTRACTOR UNLESS AN ALTERNATE SEQUENCE OF OPERATIONS IS SUBMITTED IN WRITING AND APPROVED BY THE ENGINEER.

PHASE 1 - REMOVALS AND UTILITIES

1. INSTALL TRAFFIC CONTROL AS SHOWN IN PLANS
2. INSTALL EROSION CONTROL DEVICES AS SHOWN IN PLANS
3. PERFORM REMOVALS
4. INSTALL STORM SEWER UTILITIES
5. RECONSTRUCT SUBGRADE AND BASE SECTION AS SPECIFIED IN THE PLANS

PHASE 1 - SURFACING

1. INSTALL CONCRETE CURB AND GUTTER
2. PLACE GRAVEL TO FINISH BASE COURSE ELEVATIONS
3. MAKE ALL NECESSARY UTILITY CASTING AND VALVE BOX ADJUSTMENTS
4. PLACE SURFACING (ASPHALT/CONCRETE)
5. PLACE TOPSOIL
6. PERFORM SEEDING AND APPLY HYDRO-MULCH
7. SWEEP AND CLEAN ALL SURFACING ON PROJECT
8. REMOVE EROSION CONTROL DEVICES FROM PROJECT AREA
9. REMOVE TRAFFIC CONTROL AS CONSTRUCTION ALLOWS

PHASE 2 - REMOVALS AND UTILITIES

1. INSTALL TRAFFIC CONTROL AS SHOWN IN PLANS
2. INSTALL EROSION CONTROL DEVICES AS SHOWN IN PLANS
3. PERFORM FULL DEPTH RECLAMATION
4. INSTALL STORM SEWER UTILITIES
5. RECONSTRUCT ROADWAY SUBGRADE AND BASE SECTION AS SPECIFIED IN THE PLANS

PHASE 2 - SURFACING

1. INSTALL CONCRETE CURB AND GUTTER
2. PLACE GRAVEL TO FINISH BASE COURSE ELEVATIONS
3. PLACE ASPHALT SURFACING
4. INSTALL SLOPE STABILIZATION ON INSIDE INSLOPE
5. PLACE TOPSOIL
6. PERFORM SEEDING AND APPLY HYDRO-MULCH
7. SWEEP AND CLEAN ALL SURFACING ON PROJECT
8. REMOVE EROSION CONTROL DEVICES ON PROJECT
9. REMOVE TRAFFIC CONTROL AS CONSTRUCTION ALLOWS

SPECIAL CONDITIONS

1. CONSTRUCTION SHALL BE PLANNED TO COMPLETE PHASE 1 OF THE PROJECT DURING THE 2021 CONSTRUCTION SEASON
2. CONSTRUCTION SHALL BE PLANNED TO COMPLETE PHASE 2 OF THE PROJECT DURING THE 2022 CONSTRUCTION SEASON
3. ASPHALT SURFACING SHALL BE COMPLETED ON THE PERIMETER ROADWAY PRIOR TO CONCRETE SURFACING ON THE DELIVERY ROADWAY.
4. THE CONTRACTOR SHALL ALLOW ACCESS THROUGH PHASE 2-D OF THE PROJECT AT ALL TIMES.
5. FAST TRACK CONCRETE FOR PHASE 2-D SHALL BE PLACED ON A FRIDAY TO ALLOW FOR A THREE DAY CURE PERIOD AND OPENED TO TRAFFIC THE FOLLOWING MONDAY.

TIME PROVISIONS

THE CONTRACTOR WILL COMMENCE WORK UNDER THIS CONTRACT AND SHALL BE SUBSTANTIALY COMPLETE BY **SEPTEMBER 16, 2022**. ALL WORK WITHIN SHALL BE FULLY COMPLETED BY **OCTOBER 14, 2022**. FULLY COMPLETE IS DEFINED AS ALL WORK UNDER THE CONTRACT COMPLETED. THE CONTRACTOR AGREES TO PAY LIQUIDATED DAMAGES IN THE AMOUNT OF \$600 FOR EACH WORKING DAY AFTER THE SUBSTANTIAL COMPLETION DEADLINE THAT THE PROJECT REMAINS NOT SUBSTANTIALLY COMPLETE. THE CONTRACTOR FURTHER AGREES TO PAY LIQUIDATED DAMAGES IN THE AMOUNT OF \$300 FOR EACH WORKING DAY THAT THE PROJECT IS NOT COMPLETED BEYOND THE FINAL COMPLETION DATE SPECIFIED.

CONTRACTOR FURTHER AGREES TO COMPLETE ALL WORK IN **PHASE 1** BY **OCTOBER 15, 2021**. COMPLETION IS DEFINED AS HAVING ALL UTILITY INSTALLATION, FINAL SURFACING AND STRIPING COMPLETED AND PARKING LOT AND ROADWAYS OPENED TO TRAFFIC. THE CONTRACTOR AGREES TO PAY LIQUIDATED DAMAGES IN THE AMOUNT OF \$600 FOR EACH WORKING DAY THEREAFTER THAT THE WORK REMAINS UNCOMPLETED BEYOND THE SPECIFIED DEADLINES.

ONCE ANY PORTION OF THE WORK BEGINS ON PHASE 2, THE CONTRACTOR WILL HAVE ONE-HUNDRED AND TWELVE (112) CONSECUTIVE CALENDAR DAYS TO COMPLETE THE WORK.

GENERAL MAINTENANCE OF TRAFFIC

INSTALLATION OF TRAFFIC CONTROL SHALL CONFORM TO THE MANUAL ON UNIFORM TRAFFIC CONTROL DEVICES (MUTCD) 2009 EDITION UNLESS OTHERWISE MODIFIED IN THE PLANS.

THE CONTRACTOR SHALL NOTIFY THE ENGINEER 7 DAYS PRIOR TO THE START OF CONSTRUCTION, AND BEFORE ANY SUBSTANTIAL TRAFFIC CONTROL CHANGE. THE CONTRACTOR SHALL NOTIFY THE ENGINEER 5 DAYS IN ADVANCE OF ALL OTHER TRAFFIC CONTROL CHANGES.

REMOVING, RELOCATING, SALVAGING, AND RESETTING OF EXISTING TRAFFIC CONTROL DEVICES, INCLUDING DELINEATION, SHALL BE THE RESPONSIBILITY OF THE CONTRACTOR. ANY DELINEATORS OR SIGNS DAMAGED OR LOST SHALL BE REPLACED BY THE CONTRACTOR AT NO COST TO THE OWNER. PAYMENT FOR REMOVING, SALVAGING, INSTALLING, AND/OR RESETTING OF SIGNS SHALL BE MADE USING THE APPLICABLE BID ITEMS. IF NO APPLICABLE BID ITEMS ARE INCLUDED IN THE ESTIMATE OF QUANTITIES, PAYMENT FOR REMOVING, SALVAGING, INSTALLING, AND/OR RESETTING OF SIGNS SHALL BE INCIDENTAL TO THE LUMP SUM PRICE BID FOR "TRAFFIC CONTROL, MISCELLANEOUS".

INSTALLATION, MAINTENANCE, RELOCATION AND REMOVAL OF TYPE I AND II BARRICADES, CONES, VERTICAL PANELS, DRUMS, BARRICADE WARNING LIGHTS, WATCHMEN, TUBULAR MARKERS AND FLAGS SHALL BE INCLUDED IN THE LUMP SUM PRICE BID FOR "TRAFFIC CONTROL MISCELLANEOUS".

THE CONTRACTOR OR DESIGNATED TRAFFIC CONTROL SUBCONTRACTOR SHALL ENSURE THE ADEQUACY, LEGIBILITY, AND REFLECTIVITY OF EACH SIGN AND DEVICE. SIGN WASHING SHALL BE CONSIDERED INCIDENTAL TO TRAFFIC CONTROL AND REQUIRED AS DIRECTED BY THE ENGINEER.

FLAGGER WARNING SIGNS SHALL BE INSTALLED WHEN USING FLAGGERS TO DIRECT TRAFFIC. FLAGGERS SHALL WEAR APPROPRIATE SAFETY CLOTHING AND SHALL USE A STOP/SLOW PADDLE. PAYMENT FOR FLAGGING WILL BE AT THE CONTRACT UNIT PRICE PER HOUR IF A BID ITEM HAS BEEN INCLUDED. IF NO BID ITEM IS INCLUDED, FLAGGING SHALL BE INCIDENTAL TO "TRAFFIC CONTROL, MISCELLANEOUS".

THE CONTRACTOR IS RESPONSIBLE FOR MAINTAINING ALL TRAFFIC CONTROL DEVICES THROUGHOUT THE PROJECT AT ALL TIMES IN ACCORDANCE WITH THE PLANS AND THE LATEST EDITION OF THE MUTCD. THE CONTRACTOR SHALL IMMEDIATELY TAKE APPROPRIATE MEASURES TO REMEDY ANY TRAFFIC CONTROL DEVICES THAT NEED TO REMOVED, REPLACED, ETC. DUE TO CHANGES IN PHASING, SEQUENCING, WEATHER, OR ANY OTHER REASON UPON NOTIFICATION FROM THE ENGINEER. FAILURE TO CORRECT ANY TRAFFIC CONTROL DEVICES THAT ARE NOT IN COMPLIANCE WITH THE PLANS OR THE LATEST EDITION OF THE MUTCD UPON NOTIFICATION FROM THE ENGINEER WILL RESULT IN A PRICE ADJUSTMENT TO THE CONTRACT. THE MINIMUM PRICE ADJUSTMENT TO THE CONTRACT WILL BE \$100 PER DAY PER OCCURRENCE. THE ENGINEER MAY DELAY THE ISSUANCE OF THE PRICE ADJUSTMENT(S) IF THE ENGINEER HAS DETERMINED ALL THE FOLLOWING APPLY:

- a. THE CONTRACTOR HAS MADE A GOOD FAITH EFFORT TO BRING THE ITEMS INTO COMPLIANCE WITH THE PLANS AND LATEST EDITION OF THE MUTCD.
- b. COMPLIANCE WAS NOT ACHIEVED DUE TO WEATHER CONDITIONS OUTSIDE THE CONTRACTOR'S CONTROL AND THE CONDITIONS WERE SEVERE ENOUGH TO PREVENT THE CONTRACTOR FROM BRINGING THE ITEM INTO COMPLIANCE.
- c. THE CONTRACTOR BROUGHT THE ITEM INTO COMPLIANCE AS SOON AS POSSIBLE AFTER THE WEATHER AND SITE CONDITIONS PERMIT.

PEDESTRIAN TRAFFIC

THE CONTRACTOR SHALL PROTECT AND RESTRICT ALL PEDESTRIANS FROM WORK AREAS. SAFETY FENCE SHALL BE INSTALLED AROUND ALL WORK AREAS THAT ARE ADJACENT TO PEDESTRIAN WALKWAYS AND AT OTHER LOCATIONS AS DESIGNATED BY THE ENGINEER. PAYMENT FOR ALL WORK AND ASSOCIATED MATERIALS SHALL BE INCIDENTAL TO THE CONTRACT LUMP SUM PRICE FOR "TRAFFIC CONTROL, MISCELLANEOUS".

TEMPORARY CONSTRUCTION SIGNS

INSTALLATION OF TEMPORARY TRAFFIC CONTROL SHALL CONFORM TO THE MANUAL ON UNIFORM TRAFFIC CONTROL DEVICES (MUTCD) 2009 EDITION, SECTION 6F.03 SIGN PLACEMENT, UNLESS OTHERWISE MODIFIED IN THE PLANS. SIGNS MOUNTED ON PORTABLE SIGN SUPPORTS SHALL MEET MINIMAL REQUIREMENTS PROVIDED IN PARAGRAPHS 4 THROUGH 6 OF SECTION 6F.03 SIGN PLACEMENT IF USED FOR DURATION GREATER THAN 30 DAYS.

THE R9-8 THROUGH R9-11A SERIES, R11 SERIES, W1-6 THROUGH W1-8 SERIES, M4-10, E5-1, OR OTHER SIMILAR TYPE SIGNS MAY BE USED ON PORTABLE SIGN SUPPORTS THAT DO NOT MEET THE MINIMUM MOUNTING HEIGHTS PROVIDED IN PARAGRAPHS 4 THROUGH 6 UP TO 30 DAYS. ALL OTHER SIGNS MUST MEET THE MINIMUM HEIGHT REQUIREMENTS IF USED LONGER THAN 3 DAYS.

SIGNS MOUNTED ON TYPE 3 BARRICADES SHOULD NOT COVER MORE THAN 50 PERCENT OF THE TOP TWO RAILS OR 33 PERCENT OF THE TOTAL AREA OF THE THREE RAILS.

ADDENDUM NO. 1

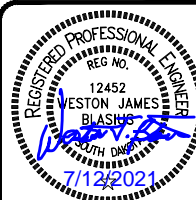
ADDENDUM NO. 1

PROJECT / SHEET TITLE: SD STATE PEN - CAMPUS WIDE PAVEMENT MAINTENANCE PHASE 2

SEQUENCE OF OPERATIONS

OSE #C1221-13X/SWMR SIOUX FALLS, SOUTH DAKOTA

REV. DATE



JOB No.: 22539.01
DATE: JUNE 2021
ENG / ARCH: WJB
DESIGNER: WJB
TECHNICIAN: CKM

0 1/2" 1"
SCALE REDUCTION BAR

SHEET No. : F-2 REV



E-1

SCALE: NONE

-

WPE WEST PLAINS
ENGINEERING, INC.

4609 SOUTH TECHLINK CIRCLE ■ SIOUX FALLS, SD 57106
PHONE: (605) 362-3753 ■ FAX: (605) 362-3759
www.westplainsengineering.com



JOB No.:	22539.01
DATE:	JUNE 2021
DESIGNED BY:	JK
CHECKED BY:	JK
DRAWN BY:	JH

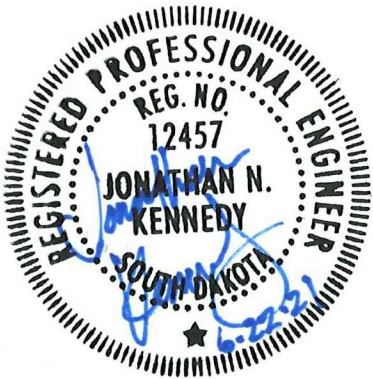
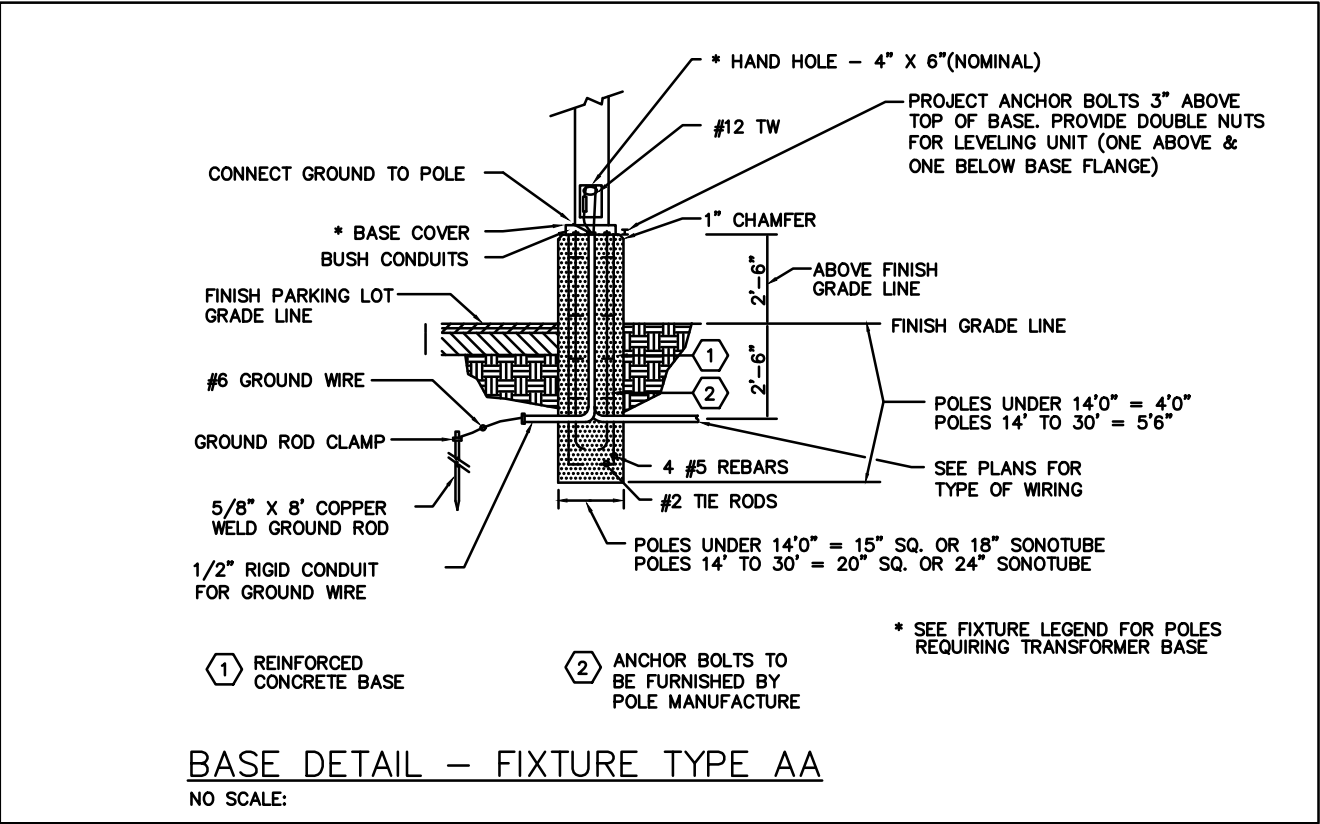
L-1

LIGHTING FIXTURE SCHEDULE

MARK	FIXTURE		VOLT.	LAMP(S)			MOUNTING		MANUFACTURER		REMARKS
	TYPE	DIFFUSER		LUMENS	WATTAGE	CCT	TYPE	HT.	NAME	SERIES NO.	
AA	POLE MOUNTED FLOODLIGHT		240	21,700	154	4000K	NOTE 1	POLE TOP NOTE 2	HOLOPHANE OR EQUAL	PSLED	WIDE FLOOD (66) BRONZE FINISH, WET LOCATION; TWO FLOOD LIGHT HEADS PER POLE FIELD ADJUSTABLE OUTPUT

NOTE 1: PROVIDE POLE-TOP ARM/YOKE MOUNT SO THAT TWO FLOOD LIGHTS MAY BE MOUNTED TO THE TOP OF THE POLE AT 180-DEGREES APART FROM EACH OTHER.

NOTE 2: PROVIDE A 25-FOOT ROUND TAPERED ALUMINUM POLE. POLE THICKNESS SHALL BE SELECTED AND PROVIDED AS REQUIRED FOR THE CONFIGURATION FOR THE WIND LOAD RATING APPLICABLE TO THIS AREA.



WPE # : BS21053

WEST PLAINS ENGINEERING, INC.

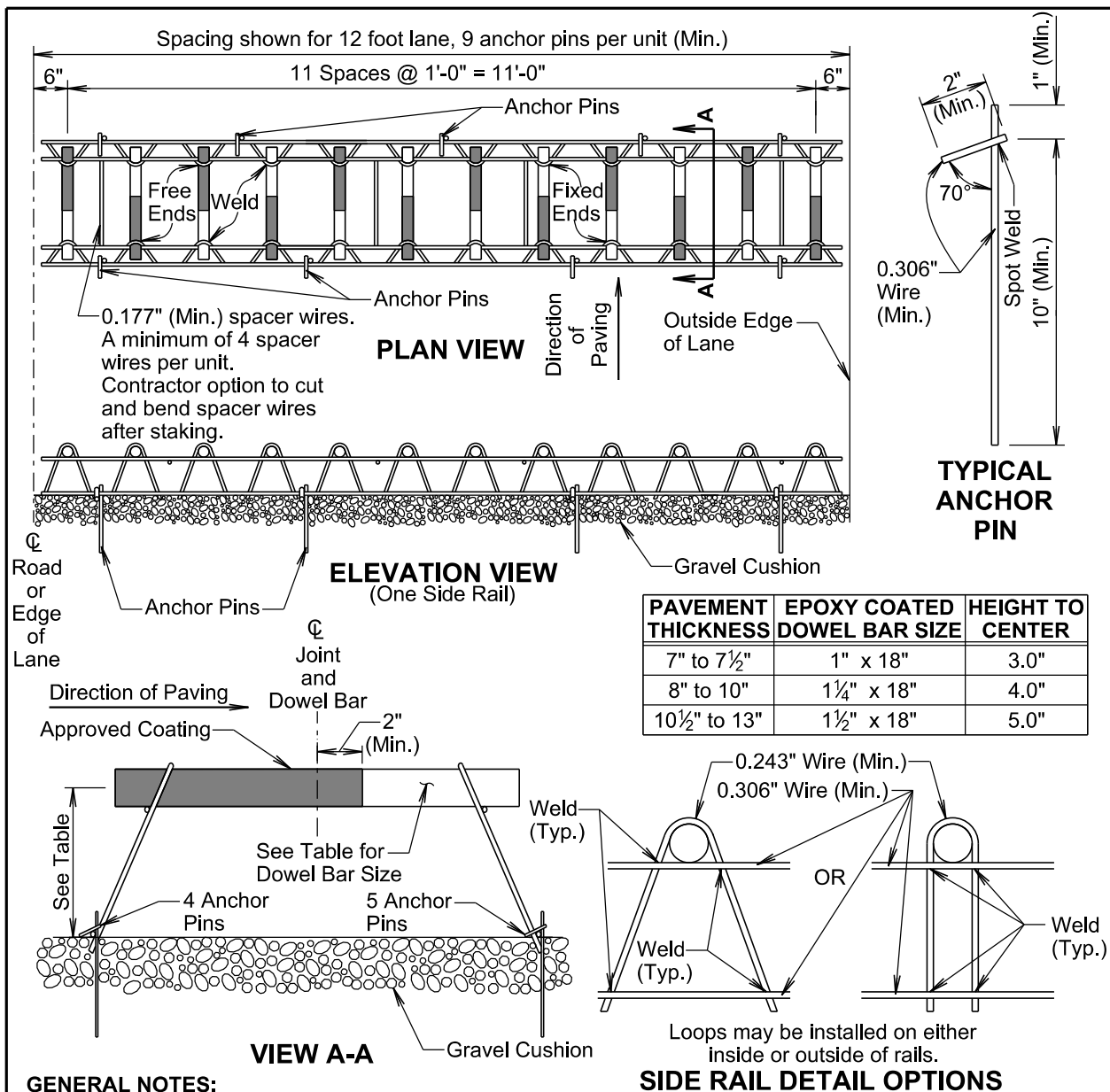
4609 SOUTH TECHLINK CIRCLE ■ SIOUX FALLS, SD 57106
PHONE: (605) 362-3753 ■ FAX: (605) 362-3759
www.westplainsengineering.com

RAPID CITY ■ SIOUX FALLS ■ CASPER, WY ■ CEDAR RAPIDS, IA ■ DES MOINES, IA

PROJECT / SHEET TITLE :		SD STATE PEN - CAMPUS WIDE PAVEMENT MAINTENANCE PHASE 2	
		LOWER WEST PARKING LOT DETAILS	
		SIOUX FALLS, SOUTH DAKOTA	
		DESCRIPTION	
REV	DATE	ADDENDUM #1	
1	7-2-21		

JOB No.:	22539.01
DATE:	JUNE 2021
DESIGNED BY:	JK
CHECKED BY:	JK
DRAWN BY:	JH

SHEET No. :
L-2



GENERAL NOTES:

Longitudinal joint tie bars will be placed a minimum of 15 inches from the transverse contraction joint.

Centerline of individual dowel bars will be parallel to top of subgrade $\pm 1/8$ inch in 18 inches and to all other dowel bars in the assembly $\pm 1/16$ inch in 18 inches.

Centerline of individual dowel bars will be parallel to the centerline of the roadway $\pm 1/2$ inch in 18 inches.

The transverse contraction joints will be sawed perpendicular to the centerline of the roadway and the dowel bars will be centered on the sawed joint ± 1 inch.

Supporting devices as shown on this sheet, or equivalent as approved by the Engineer, will be used to maintain proper horizontal and vertical alignment of the dowel bars.

June 26, 2019

Published Date: 2nd Qtr. 2021

**S
D
D
O
T**

**PCC PAVEMENT DOWEL BAR ASSEMBLY
FOR TRANSVERSE CONTRACTION JOINTS
12 Bar Assembly on Granular Base Material**

**PLATE NUMBER
380.01**

Sheet 1 of 1