



Banner Associates, Inc.
409 22nd Ave So, Box 298
Brookings, SD 57006
Tel 605.692.6342
Toll Free 855.323.6342
www.bannerassociates.com

ADDENDUM | No. 1

PROJECT	Mni Waste – 2.0 MG Elevated Water Tower
BID DATE	1:00 PM MST November 09, 2017
BID LOCATION	Mni Waste Water Company 228 East Prairie Road, Eagle Butte, SD 57625
ISSUE DATE	November 3, 2017
NOTICE	Failure to acknowledge all addenda in the BID may cause rejection of the BID. See Instructions to Bidders.

SCOPE OF THIS ADDENDUM

The following becomes a part of the original project manual and drawings, taking precedence over the items that may conflict. The bidder shall note receipt and make acknowledgment of the Addendum on his/her bid form, incorporating its provision in his/her bid.

GENERAL

PROJECT MANUAL

The following additions, changes and clarifications have been made to the Project Manual.

Section 05 521 – Pipe and Tube Railings

Section 2.2,

Add:

- C. All handrails/guardrails shall be constructed with aluminum, except for roof guardrail. Roof guardrail shall be constructed of carbon steel, designed as noted in performance requirements paragraph and connection to roof shall be a welded connection. Roof guardrail shall be coated with the same requirements as the exterior of the roof.

Section 11 700– Interior Piping and Valves,

Section 2.2.E,

Delete: Remove Paragraph in entirety



Add:

- E. Concrete Encasement: All buried mechanical joint pipe and fittings located below floor slabs and extending to treated water segment 2 piping shall be encased in concrete as shown on the Drawings. Concrete shall meet the Specifications set forth in Section 03300.

Section 2.3, E,

Delete: Remove Paragraph in entirety

Add:

- F. Pressure Reducing Valve with Solenoid Control: The Combination Pressure Reducing and Solenoid Control Valve shall automatically throttle to reduce a higher incoming (upstream) pressure and maintain an accurate and constant lower outlet (downstream) pressure regardless of changing flow rate and/or inlet pressure. If the outlet (downstream) pressure increases above the pressure reducing pilot control spring setting, the valve shall close. The solenoid control shall intercept the pressure reducing control and allow for remote override capability to close the main valve.
 - 1. Main Valve:
 - a. The valve shall be hydraulically operated, single diaphragm-actuated, globe or angle pattern. The valve shall consist of three major components: the body with seat installed, the cover with bearing installed, and the diaphragm assembly. The diaphragm assembly shall be the only moving part and shall form a sealed chamber in the upper portion of the valve, separating operating pressure from line pressure. Packing glands and/or stuffing boxes are not permitted and there shall be no pistons operating the main valve or pilot controls.
 - 2. Main Valve Body:
 - a. No separate chambers shall be allowed between the main valve cover and body. Valve body and cover shall be of fusion bonded epoxy inside and out cast material. No fabrication or welding shall be used in the manufacturing process.
 - b. The valve shall contain a resilient, synthetic rubber disc with a rectangular cross-section contained on three and one-half sides by a disc retainer and forming a tight seal against a single removable seat insert. No O-ring type discs (circular, square, or quad type) shall be permitted as the seating surface. The disc guide shall be of the contoured type to permit smooth transition of flow and shall hold the disc firmly in place. The disc retainer shall be of a sturdy one-piece design capable of withstanding opening and closing shocks. It must have straight edge sides and a radius at the top edge to prevent excessive diaphragm wear as the diaphragm flexes across this surface.
 - c. The diaphragm assembly containing a non-magnetic 303 stainless steel stem of sufficient diameter to withstand high hydraulic pressures shall be fully guided at both ends by a bearing in the valve cover and an integral bearing in the valve seat. The seat shall be a solid, one-piece design and shall have a minimum of a five-degree taper on the seating surface for a positive, drip-tight shut off. No center guides shall be permitted. The stem shall be drilled and tapped in the cover end to receive and affix such accessories as may be deemed necessary. The



diaphragm assembly shall be the only moving part and shall form a sealed chamber in the upper portion of the valve separating operating pressure from line pressure.

- d. The flexible, non-wicking, FDA approved diaphragm shall consist of nylon fabric bonded with synthetic rubber compatible with the operating fluid. The center hole for the main valve stem must be sealed by the vulcanized process or a rubber grommet sealing the center stem hole from the operating pressure. The diaphragm must withstand a Mullins Burst Test of a minimum of 600 psi per layer of nylon fabric and shall be cycle tested 100,000 times to insure longevity. The diaphragm shall not be used as the seating surface. The diaphragm shall be fully supported in the valve body and cover by machined surfaces that support no less than one-half of the total surface area of the diaphragm in either the fully open or fully closed position.
- e. The main valve seat and the stem bearing in the valve cover shall be removable. The cover bearing and seat in 6" and smaller size valves shall be threaded into the cover and body. The lower bearing of the valve stem shall be contained concentrically within the seat and shall be exposed to the flow on all sides to avoid deposits. Cover bearing, disc retainer, and seat shall be made of the same material. All necessary repairs and/or modifications other than replacement of the main valve body shall be possible without removing the valve from the pipeline. Packing glands and/or stuffing boxes shall not be permitted and components including cast material shall be of North American manufacture.
- f. The valve manufacturer shall warrant the valve to be free of defects in material and workmanship for a period of three years from date of shipment provided the valve is installed and used in accordance with all applicable instructions. Electrical components shall have a one-year warranty.
- g. The valve manufacturer shall also provide a computerized cavitation chart which show flow rate, differential pressure, percentage of valve opening, Cv factor, system velocity, and if there will be cavitation damage.

3. Material Specifications:

- | | | |
|----|------------------|---|
| a. | Valve Size: | As Shown on Plans |
| b. | Quantity: | As Shown on Plans |
| c. | Operating Fluid: | Potable Water |
| d. | End Detail: | Class 125 Flange |
| e. | Desired Options: | Fast Opening, Dual Pilot, Closing & Opening Speed Control
Isolation valves on pilot piping
Valve Position Transmitter |

4. Pilot Control System: The pressure reducing pilot control shall be a direct-acting, adjustable, spring-loaded, normally open, diaphragm valve designed to permit flow when controlled pressure is less than the spring setting. The pilot control is held open by the force of the compression on the spring above the diaphragm, and it closes when the delivery pressure acting on the underside of the diaphragm exceeds the spring setting. The pilot control system shall include a strainer and a fixed orifice closing speed. No variable orifices shall be permitted.
- a. The pilot control system shall include all required control accessories, equipment, control tubing and fittings. The pilot system shall include an opening speed control on all valves sizes 3" and smaller as standard equipment. The pilot control shall have a second downstream



sensing port which can be utilized to install a pressure gauge. A full range of spring settings shall be available in ranges of 0 to 400 psi. Pilot to be manufactured by control valve manufacture. Pilot shall be NSF Certified.

- b. The solenoid pilot control shall be a direct acting two way solenoid valve controlled by an external electrical power source. Solenoid shall have a NEMA IV enclosure.
- 5. Manufacturer: The valve shall be Cla-Val Model No. 93-01/693-01 Pressure Reducing and Solenoid Shut-off Valve with X117C Valve Position Transmitter, OCV Model 127-80 Control Valve with Model 190 Valve Position Transmitter or Engineer approved equal."

Section 13 210 – Composite Elevated Water Storage Tanks

Section 1.4, F,

Add:

"F. Engineer Supplied Information

1. The Engineer filed Form 7460-1 with the FAA (<http://forms.faa.gov/>) to determine FAA requirements for height restrictions, obstruction marking, or obstruction" lighting. The "Determination of No Hazard to Air Navigation" is available on the Banner Associates website. "

Section 2.6, D,

Delete: Last sentence in paragraph "~~All components shall be galvanized steel.~~"

Add: "All components shall be constructed of aluminum; fabricated and installed in accordance with Section 05120, Section 05500 and 05521 of the specifications."

Section 2.6, E, 1,

Delete: Last sentence in paragraph "~~All components shall be galvanized steel.~~"

Add: "All components shall be constructed of aluminum; fabricated and installed in accordance with Section 05120, Section 05500 and 05521 of the specifications."

Section 2.6, L.4.,

Clarification: Furnish and install non-freeze drain valve with stainless steel internal materials as shown per detail 2/1-13.2

Section 3.3,

Clarification: An in-house full time CWI inspector can be used during welding operations. The intent of the specifications Section 13210 Paragraph 3.3 G is that a third-party CWI firm will be used to verify that the welders qualifications are in order and that the person doing the welding is correctly stamped and qualified. The third-party CWI firm will also conduct the specified radiograph random shots at the number of locations per the specification.



Section 13 211 – Fluted Column Elevated Water Storage Tanks

Section 2.4, D, 1,

Delete: Last sentence in paragraph “~~All components shall be galvanized steel.~~”

Add: “All components shall be constructed of aluminum; fabricated and installed in accordance with Section 05120, Section 05500 and 05521 of the specifications.”

Section 2.4, E, 1,

Delete: Last sentence in paragraph “~~All components shall be galvanized steel.~~”

Add: “All components shall be constructed of aluminum; fabricated and installed in accordance with Section 05120, Section 05500 and 05521 of the specifications.”

Section 13212 – Spheroid Elevated Water Storage Tanks (Spheroid Style)

Section 2.3, B,

Delete: Paragraphs 6, 7, 8, and 9 in their entirety.

Add:

6. Ladders shall be fabricated and installed in accordance with Section 05500 of the specifications.

Section 13 832– Monitoring and Control System,

Section 2.1.C.2 ,j,

Add:

- J. 2.0 MG Tower Radio Telemetry System: Control System Integrator shall be responsible for making modifications to the existing radio telemetry system. Work included, but not limited to furnishing and installing new radio, antenna, and alignment as described in the following paragraphs:
 - 1. Furnish and install a new MDS INET 900 radio on new water tower. Establish communications between the new water tower and the existing radios at the Health Care Center Elevated Tower.
 - 2. Control System Integrator shall be responsible for compiling with radio telemetry system improvements as indicated in the document “Wireless Network Propagation/Path Profile Analysis for Health Care Center Elevated Tank (HCC ET) to Eagle Butte Water Tower [Near Fairgrounds] (EB Fairgrounds WT) Profile” is available on the Banner Associates website.

Section 13 832– Monitoring and Control System,

Section 2.1.C.3 ,i,

Add:

- I. HWY 212 Control Valve Radio Telemetry System: Control System Integrator shall be responsible for making modifications to the existing radio telemetry system. Work included, but not limited to furnishing and



installing new radios, antennas, and tower, radio and antenna replacement, and antenna realignment as described in the following paragraphs:

1. Furnish and install a new 45' antenna tower at the new HWY 212 control valve vault and replace existing antenna and radios at the Parade Elevated Tower. Furnish and install new MDS Orbit MCR 900 radio at new control valve vault and remove and replace existing radio at the Parade Water Tower with new MDS Orbit MCR 900 radio.
2. Control System Integrator shall be responsible for compiling with radio telemetry system improvements as indicated in the document "Wireless Network Propagation/Path Profile Analysis for Tri County New WTP Topology Profiles" is available on the Banner Associates website.

Section 13 833– Primary Process Measuring Devices,

Section 2, I,

Add:

- I. Electro-Magnetic Flow Meters: Furnish and install electro-magnetic flowmeters for the measurement point listed herein and at the location as generally indicated on the Drawings.

1. General. The magnetic flowmeters shall be designed for measurement of velocity and flow of liquids containing solids in a meter body constructed of ductile iron, stainless steel, or epoxy coated steel.
2. Performance requirements for each transducer and transmitter are as follows:

Output Signal:	4-20 mA DC linear with flow
Accuracy:	+/- 0.1% of span
Repeatability:	+/- 0.1% of point
Calibration:	Factory calibrated for application, field adjustable
Transmitter Enclosure:	NEMA 4X enclosure
	Transmitter shall be mounted separately from the metering tube
Display on Transmitter:	Digital
Power Supply:	120 VAC – Powered from the Control Panel
Zero and Span Adjustments:	Continuously adjustable, non interactive
Submergence:	Suitable for accidental submergence
Materials of Construction:	
Metering tube:	304 Stainless Steel with Rubber Liner
Electrodes:	Alloy C or 316 SS
Gaskets:	Viton or equal
Connections:	ANSI Class 125 lb or Class 250 lb Flanges w/ SS Ground Rings

3. Specific Application Requirements:

<u>ID Code</u>	<u>Installation Identification</u>	<u>Size</u>	<u>Installation Notes</u>
FIT-201	PRV FACILITY FLOW	8"	



4. Approved Manufacturers: Magnetic meters shall be Badger, Endress-Hauser, Rosemount, Siemens, Spirax, or Engineer approved equal.

APPENDIX MATERIALS

Add: Permit/Easements

CRST FONSI Summary Letters

DRAWINGS

The following additions, changes and clarifications have been made to the Drawings.

Drawing Sheet 2.2-ALT.

Existing Borrow Site Area Alternate,

Add: New Drawing Sheet

This drawing sheet has been added to identify the borrow site reclamation.

Drawing Sheet 1-4.1.

Notes:

Delete: "Concrete compressive strength shall be 4500 psi min. at 28 days."

Add: Minimum concrete compressive strength shall be as indicated in specifications.

Drawing Sheet 1-2.4.

Detail 2/1-2.4 and 3/1-2.4:

Clarification: Contractor shall use MJ long body sleeve and restraints to make connection between ductile iron pipe and existing PVC pipe. Fittings and restraints shall be coated in accordance with Section 09902.

Drawing Sheet 2-2.1.

WATER (THIS CONTRACT):

Delete: "4 LF – 10" DIA D.I. PIPE
1 EA – 10" ANCHOR COUPLING"

Add: "2 EA – 10" ANCHOR COUPLING"

Clarification: Provide materials as shown in Detail 2/2-2.2 and provide fittings and restraints coated in accordance with Section 09902.



Drawing Sheet 2-2.2.

Detail 1/2-2.2:

Clarification: Existing 24-inch valve has flanged connection with a blind flange currently installed. Contractor to remove blind flange and provide insulation kit and fabricated piece to transition between flanged and MJ piping. Buried fittings and restraints shall be coated in accordance with Section 09902.

NOTE

The Plan Holders List and Addendums are available on our website at <http://www.bannerassociates.com> by clicking on **View Bid Information / Project Name / Project Information** link.

Project Manual and Drawing inquiries regarding the work should be directed to:

CONTACT PERSON(S)

Banner Associates, Inc.

Tel 1-605-692-6342 | Toll Free 1-855-323-6342 | Fax 1-605-692-5714

Kristin Bisgard, P.E.

Project Manager

kristinb@bannerassociates.com

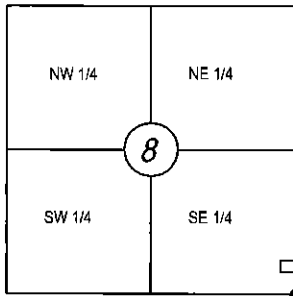
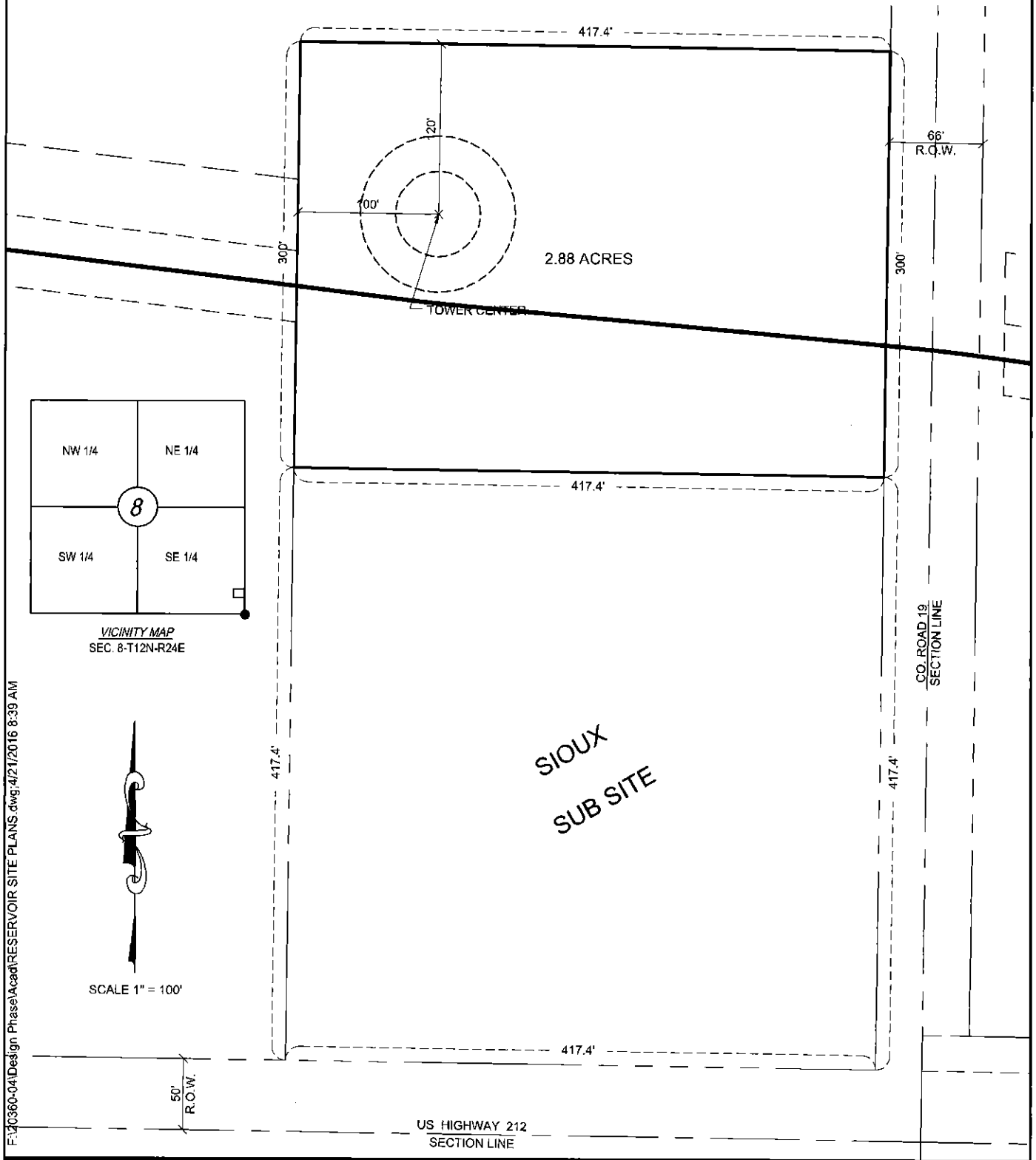
ATTACHMENTS

1. Appendix A Documents
2. Prebid Conference Minutes

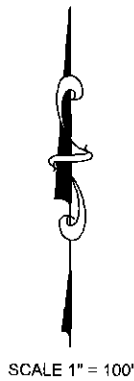


Kristin Bisgard (P.E.) #6987

MWWC RESERVOIR LEASE SITE EXHIBIT IN THE
SE1/4 OF SECTION 8, TOWNSHIP 12 NORTH, RANGE 24 EAST OF THE BLACK HILLS MERIDIAN,
DEWEY COUNTY, SOUTH DAKOTA



VICINITY MAP
SEC. 8-T12N-R24E



F:\20360-04\Design Phase\Acad\RESERVOIR SITE PLANS.dwg:4/21/2016 8:39 AM

BANNER

409 22nd Ave. S. P.O. Box 298
Brookings, South Dakota 57006
Tel: 605-692-6342
Toll Free: 1-855-323-6342
www.bannerassociates.com

PROJECT TITLE:

**MWWC
2MG RESERVOIR
EASEMENT EXHIBIT**

PROJECT LOCATION:

DEWEY COUNTY

OWNER:

**CHEYENNE RIVER
SIOUX TRIBE**

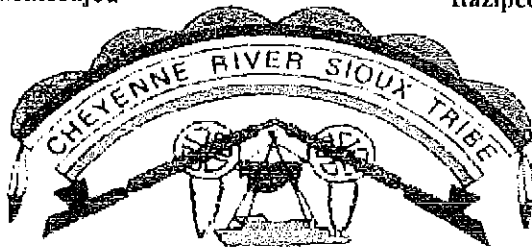
DRAWN BY: S.A.N.
DESIGNED BY: S.V.M.
CHECKED BY: N.W.N.
JOB NO: 20360.05.01
DATE: APRIL 2016

SCALE REDUCTION BAR

PARCEL NO.:
1

Muicoujou

Itazipco



Siha Sapa

Oohenumpa

CHEYENNE RIVER SIOUX TRIBE

Cultural Preservation Office
PO BOX 590 98 S. Willow St.
Eagle Butte, South Dakota 57625
Telephone: (605) 964-7554
Fax: (605) 964-7552

Cultural Programs Administrator
Donna Rae Petersen
Email: donna.rae.petersen@crst-nsn.gov

September 8, 2011

Earp Fischer
Mni Waste
228 East Prairie Road
PO 490
Eagle Butte, SD 57625

Dear Mr. Fischer:

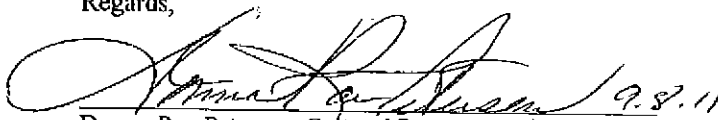
Enclosed with this letter are copies of documents as we have on record regarding the new Mni Waste Water Line – from the new in-take structure. The copies will support our contention that you do have all the Cultural Resource Survey levels as necessary for the progress of the water line development. The letter of response to you, regarding no significant findings and clearance by the THPO Steve Vance is the last piece of correspondence we hold.

Appropriately these documents should be shared with all contractors and sub-contractors, USDA, and BIA. Please assist us with providing the copies to those entities. Hopefully, this should clear up any questions regarding our work and or the work of any of the archaeologists whom professionally provided their services to this very important and needed project and work as performed ; a Class III Survey.

Also, to be noted, as you personally moved pin flags within the corridor of our survey, and did request our Staff GIS those new flagged spots, please note; the new are still in the surveyed corridor. There is no need for another survey. The corridor work was and is completed within the provided document, and we will provide you with a computer disk of the information regarding your new pin flagged spots in the relevant corridor.

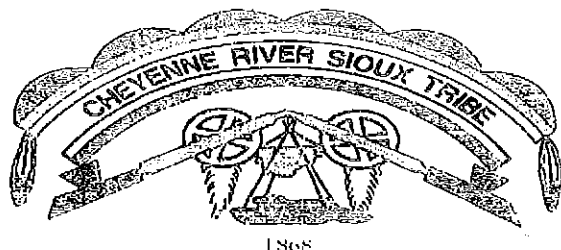
Should you have need for further information, we will look forward to hearing from you.

Regards,


Donna Rae Petersen, Cultural Programs Administrator


Steve Vance, THPO

cc: File (2)



CULTURAL PRESERVATION OFFICE

PO Box 590

Eagle Butte, SD 57625

605-964-7553

605-964-7554

605-964-7552 (FAX)

Date: March 29, 2011

Earp Fischer
Mni Waste
228 East Prairie Road
PO Box 490
Eagle Butte, South Dakota 57625

Re: Tri-County Water Association – Mni Waste Waterline Upgrade Project for the Cheyenne River Sioux Tribe

The CRST – Cultural Preservation Office concurs that consultation is completed under the National Historic Preservation Act with reference to the Mni Waste Waterline Upgrade Project. We also concur to the **“No Adverse Effect findings by the undertaking;”** however Standard Conditions of Compliance must be adhered to.

We request that the Contractor(s) obtain from our Office a permit for excavation, and provide onsite Monitor(s) throughout the undertakings; this will ensure that Standard Conditions of Compliance are adhered to.

In the unlikely event that cultural resources are encountered within the project area during any ground-disturbing activities, all work will cease until a qualified archaeologist has documented and evaluated the resource for eligibility for the National Register of Historic Places, in compliance with Section 106 of the National Historic Preservation Act (NHPA). In the event human remains, funerary objects, or Native American sacred objects are discovered, all work will cease and the provisions of the Native American Graves Protection and Repatriation Act (NAGPRA) will be implemented immediately. These procedures include but are not limited to: determination of the nature of the remains by a qualified archaeologist (crime scene, prehistoric/Native American remains) within 24 hours, contact the Cheyenne River Tribal Historic Preservation Officer (THPO), if the remains are determined to be part of a larger archaeological site.

Should you need further information, please call our Office.

Respectfully,

A handwritten signature in black ink, appearing to read 'Steven Vance', with a long horizontal line extending to the right.

Steven Vance, Tribal Historic Preservation Officer

Cc: file



**United States Department of Agriculture
Rural Development
Huron State Office**

EXHIBIT E - FINDING OF NO SIGNIFICANT IMPACT LETTER

Staff Instruction 1794-I

**SUBJECT: Mni' Waster Water Company
FINDING OF NO SIGNIFICANT IMPACT**

TO: PROJECT FILE

I have reviewed the Environmental Report prepared by Matrix Consulting Group, site specific survey's, and associated FONSI.

I accept that the environmental review has been conducted in accordance with the National Environmental Policy Act (NEPA), as amended (42 U.S.C. 6941 et seq.); the Council on Environmental Quality Regulations for Implementing the Procedural Provisions of the National Environmental Policy Act (40 CFR Parts 1500-1508); and that it is generally consistent with 7 CFR Part 1794, Rural Utilities Service's Environmental Policies and Procedures. I therefore concur that the proposed project will not have a significant impact on the environment and that an Environmental Impact Statement will not be required.

**DOUGLAS ROEHL
COMMUNITY PROGRAMS DIRECTOR**

9/13/10
Date

200 4th Street SW • Federal Building • Room 210 • Huron, SD 57350
Phone: (605) 352-1100 • Fax: (605) 352-1146 • TDD: (605) 352-1147 • Web: <http://www.rurdev.usda.gov/sd>

Committed to the future of rural communities.

"USDA is an equal opportunity provider, employer and lender."
To file a complaint of discrimination write USDA, Director, Office of Civil Rights, 1400 Independence Avenue, S.W.,
Washington, DC 20250-9410 or call (800)795-3272 (voice) or (202) 720-6382 (TDD).



**United States Department of Agriculture
Rural Development
Huron State Office**

EXHIBIT A - ENVIRONMENTAL REPORT / DOCUMENTATION ACCEPTANCE

Staff Instruction 1794-1

**SUBJECT: Mni' Waste Water Company
(Matrix Consulting Group ER)**

**TO: DOUGLAS ROEHL, DIRECTOR
BUSINESS & COMMUNITY PROGRAMS**

I have reviewed the subject Environmental Report/Environmental Documentation and have made the following determinations:

CONCURRENCE WITH CLASSIFICATION OF PROPOSAL

- ☐ Categorical Exclusion with an Environmental Report (7 CFR 1794.22 (b) and (c))
- ☒ Environmental Assessment (7 CFR 1794.23 (a) and (b))

**ACCEPTANCE OF ENVIRONMENTAL REPORT/ENVIRONMENTAL
DOCUMENTATION**

- ☒ Acceptable
- ☐ Unacceptable. In order to bring the report into compliance with regulatory and Agency requirements, please address the items listed in Exhibit B.

200 4th Street SW • Federal Building • Room 210 • Huron, SD 57350
Phone: (605) 352-1100 • Fax: (605) 352-1146 • TDD: (605) 352-1147 • Web: <http://www.rurdev.usda.gov/sd>

Committed to the future of rural communities

"USDA is an equal opportunity provider, employer and lender."
To file a complaint of discrimination write USDA, Director, Office of Civil Rights, 1400 Independence Avenue, S.W.,
Washington, DC 20250-9410 or call (800)795-3272 (voice) or (202) 720-6382 (TDD).

PUBLIC NOTIFICATION REQUIREMENTS

Please inform the applicant to publish the following public notices in the non-classified section of newspapers of local circulation:

☐ CATEGORICAL EXCLUSION

☐ NO PUBLIC NOTICE REQUIRED

☐ PRELIMINARY NOTICE

The items checked shall be included in this public notice:

☐ Important Farmland (Conversion of)

☐ Flood plains (Facility construction in, not utility lines)

☐ Wetlands (Facility construction in, not utility lines)

☐ Cultural Resources (Adverse effect of)

☒ ENVIRONMENTAL ASSESSMENT¹

☒ NOTICE ANNOUNCING THE AVAILABILITY OF ENVIRONMENTAL ASSESSMENT

If any of the following are checked integrate the information normally included in a Preliminary Notice

☐ Important Farmland (Conversion of)

☐ Flood plains (Facility construction in, not utility lines)

☐ Wetlands (Facility construction in, not utility lines)

☐ Cultural Resources (Adverse effect of)

☒ FINDING OF NO SIGNIFICANT IMPACT

☐ SEE ATTACHED NOTICE OF INTENT TO ADOPT THE CDBG ENVIRONMENTAL


DANA S. KLEINSASSER
Acting State Environmental Coordinator

9/13/10
DATE

¹ If this review and acceptance is for the adoption of completed environmental documentation prepared for or by another Federal Agency or for the acceptance and incorporation of similar documents from other sources, check the box for the Finding of No Significant Impact and fill out SI 1794-1, Exhibit D.



**PRE-BID CONFERENCE MINUTES
MWWC 2.0 MG ELEVATED WATER TOWER
Eagle Butte, SD
for
Mni Wasté Water Company
Eagle Butte, South Dakota**

Pre-bid date – October 26, 2017 - 1:00 PM MDT

1. INTRODUCTIONS

2. ROSTER

- Please sign the roster sheet

3. WORK INCLUDES:

Project location is within the Cheyenne River Sioux Tribe (CRST) Reservation, SD. The work to be performed under this Contract consists of, but is not limited to the following:

- A 2.0 MG elevated water tower with a height to overflow of 186 feet and all piping, fittings, appurtenances and valves. The ground floor of the tower will be used as a storage facility and control room;
- Site work, yard piping, perimeter fencing, energy dissipation structure, rip-rap lined overflow channel, culverts, gravel surfaced access road and parking area;
- Furnish, transport and install a pre-fabricated pressure reducing vault and connect to existing piping systems near the intersection of U.S. Highway 212 and BIA Road 19 (approximately 12.5 miles east of Eagle Butte);
- All mechanical, electrical and control equipment necessary to provide a fully functioning facility;
- Corrosion protection system components including coatings, linings, and cathodic protection systems;
- Temporary and permanent erosion control, reclamation and seeding;
- Traffic control and haul road maintenance during construction;
- Reservoir and pipeline cleaning, flushing, hydrostatic pressure testing and disinfection; and
- Clean up, startup services, and all other miscellaneous work required but not herein mentioned but inferred from the construction Contract Documents.

4. FUNDING:

Funding is through the USDA Rural Development (RD) and the Cheyenne River Sioux Tribe (CRST). The USDA Rural Development is the lead Federal Agency.

5. BID OPENING DATE AND TIME:

The bids shall be prepared and delivered in a sealed envelope to Mni Wasté Water Company, **228 East Prairie Road, Eagle Butte, SD 57625**, ATTENTION: SEALED BID – MWWC Water Treatment Plant & Intake Modifications, not later than **1:00 PM MST** (local time - our clock) on **November 9, 2017**, at which time all bids will be read aloud publicly and in the presence of the bidders and their representatives.

6. PROPOSAL (follow Instructions to Bidders):

- a. Use forms in Contract Documents and Specifications.
- b. Attach to Bid Form (The following items):
 - Bid Form (acknowledge all addenda, total bid price *including* 2.0 MG Elevated Water Tower and Pressure Reducing Vault, sign and attest bid)
 - Bid Security
 - Evidence of authority to do business in the state or jurisdiction of the Project
 - US Dept. of Agriculture Forms
 - Form AD-1048 Certification Regarding Debarment, Suspension, Ineligibility and Voluntary Exclusion – Lower Tier Covered Transactions
 - Form RD 400-6 Compliance Statement
 - RD Instruction 1940-Q Exhibit A-1 Certification for Contracts, Grants and Loans
 - Form LLL Disclosure of Lobbying Activities
 - The apparent successful bidder shall submit to the Engineer within 5 days after the Bid Opening the following:
 - Bidders Statement of Qualifications
 - One page drawing showing the general dimensions of the water tower bid

7. CONTRACT TIME:

- Work must be **Substantially Complete** on or before **July 15, 2019**, and be ready for **final payment** (100% Complete) by **August 31, 2019**.
- Liquidated Damages: As set forth in the Agreement, **\$1,225/day** for time after the substantial completion date until work is substantially complete and **\$545/day** for time after the 100% completion date.

- Milestone 1: Pre-fabricated pressure reducing vault and connection to existing pipe near the intersection of US Highway 212 and BIA Road 19. Completion date of **July 1, 2018**. Contractor shall pay Owner **\$480/day** for each day that expires after the time specified for achievement of Milestone 1. (Agreement 00520, pgs 2-3).

8. BASIS OF AWARD AND OWNER'S BIDDING RIGHTS:

Contract will be awarded to the Bidder whose evaluation by the Owner indicates to the Owner that the award will be in the best interests of the Owner. Investigations (if appropriate) may be conducted by the Owner to assist the Owner in determining the Bid that is in the best interest of the Project. Refer to Article 19 of Section 00200 - Instructions to Bidders.

9. INTERPRETATIONS:

- Only addenda can modify documents.
 - Addendum No. 1 will be distributed the week of Oct 30 – Nov 3
- Refer to Article 7 of Section 00200 - Instructions to Bidders

Addenda can also be found and printed off of the website at www.bannerassociates.com and located under Bid Information. An updated planholders list is also available for download from the same site.

10. AGREEMENT:

- Agreement is included in the Contract Documents.
- Construction performance and payment bonds required in the amount of 100% of the contract award for each bond.

11. ENVIRONMENTAL ISSUES:

- Refer to Section 01100 – Environmental Quality Protection including not limited items of special note:
 - General Contractor responsible for compliance, even subcontracted work
 - 3.3 – Dust Abatement, County Road 19 (County Superintendent – Lyle Richter)
 - 3.4 – Historical & Archaeological Resources – CPO permits and Monitors
 - 3.5 & 3.6 – Borrow Areas – Tribal clearances and approvals required within Reservation boundaries; new borrow areas on Tribal lands subject to Contractor submitting and being granted BIA Mining Permit including CPO clearances and potential Environmental Assessment process – lengthy process, could require 6+ months.
- Refer to Appendix - FONSI Summary Letters & Reservoir Site Plan Easement (Addendum #1)

12. REPORTS, GEOTECHNICAL AND OTHER INFORMATION:

Reports and geotechnical explorations are not part of Contract Documents and are not included with the Contract Documents and may be examined on line at www.bannerassociates.com or at the Engineers office during regular business hours at:

Banner Associates, Inc.
409 22nd Ave. South
Brookings, SD 57006-0298
(605) 692-6342

Other information includes:

1. Report dated January 13, 2016 prepared by American Engineering Testing, Inc. and entitled, *Report of Geotechnical Exploration and Review; Proposed Water Storage Tank; NW Corner of Hwy 212 & County Road 19; Eagle Butte, South Dakota.* (AET No. 17-02437). The “technical data” contained in this report upon which Contractor may rely are the test boring logs and laboratory test results.
2. Report dated November 20, 2013 prepared by American Engineering Testing, Inc. and entitled, *Report of Geotechnical Exploration and Review; Proposed MWWC Treated Water Transmission Line; Eagle Butte, South Dakota.* (AET No. 17-01817). The “technical data” contained in this report upon which Contractor may rely are the test boring logs and laboratory test results.

13. PERMITS, FEES, & UTILITIES:

- Contractor responsible for all permits, filing permits, fees, security, utilities, temporary electricity, water, etc. [exception is internet service for Engineer’s Field Office]
 - Tribal Solid Waste Fee of 1% (Instructions to Bidders)
- Contractor responsible for all Tribal and State taxes as may apply
- Contractor and Subcontractors must have valid Tribal Business License
- TERO Compliance Plan by Contractor and pertinent fees
 - Fees to be paid PRIOR to commencing work
 - Tero Fee – 2% of the total gross
 - CRST’s Bureau of Apprenticeship and Training (BAT) Fee = 0.33%
- Section 01500 – Contractor required to obtain and comply with Haul Road agreements and other roadway as may be used by the Contractor. “Sign-off” by appropriate Road Authorities required at end of Project before final payment will be made.
- Cultural Preservation / Excavating Permits to be obtained by Contractor 14 days prior to when needed – CRST Certified Cultural Monitor must be on site during any ground disturbing activity (updated working schedule to be provided by Contractor to allow coordination of Owner-provided monitors – 48-hr notice)

- Section 01105 - Note that Contractor shall submit Notice of Intent (NOI) and develop a Pollution Prevention Plan, dewatering permits, etc. to appropriate EPA and CRST agencies. NOI must be submitted a minimum of 15 days prior to start of construction activities.
- Project is a SD "Qualified Utility Project"
 - http://dor.sd.gov/Taxes/Business_Taxes/Publications/PDFs/QualifiedUtilityProjects0713.pdf

14. PAYMENTS:

- Monthly
- 10% retainage.

15. FIELD ENGINEERING/SURVEYING:

- Surveying (Section 01050):
 - Engineer will establish major survey control points.
 - Engineer to furnish offset staking for layout of the Work. All other surveying work by the CONTRACTOR.
 - Engineer may perform check surveys for grade and quantities
- Quality Control Services (Section 01400):
 - Quality control testing for materials associated with soils, bedding and backfill, water quality and bacteriological, weld inspections, and concrete mix & concrete field testing (including cylinders) shall be performed by Contractor.
 - Quality assurance testing may be by Owner through Engineer.

16. PRECONSTRUCTION CONFERENCE:

- Preconstruction conference will be held within 10 days after Notice-to-Proceed and prior to mobilization to site.
- Contractor's key personnel are required to attend, including principal subcontractors and suppliers representatives. All governing agencies and utilities shall also be invited to attend.
- Cultural Preservation Awareness instructions shall be attended by Contractor's crew(s) and Owner's Representatives prior to commencing any construction activities.

17. MISC. ITEMS OF NOTE:

- C-700, 6.02 Owner's written permission required for Sat, Sun, Holiday work
- Cultural Preservation Permit / Excavating Permit
 - CRST Cultural Preservation Certified Monitor (Owner provided) – must be present for ground disturbing activities during performance of Agreement
- TERO Compliance
 - TERO fees and other taxes are to be included in Bid Amount

- TERO Payment Arrangement is between TERO office and Contractor
- TERO Compliance Plan required 2 weeks prior to start of work
- TERO – in addition to his Compliance Plan, General Contractor responsible for ensuring submission of Compliance Plan and fees by all Subcontractors
- Field Offices – refer to Section 01500
 - Engineer's Field Office, Paragraph 3.6
 - Contractor's Superintendent's Field Office, Paragraph 3.7
- Water for Construction Purposes – see Section 01500, Paragraph 3.8
- Project Closeout – see Section 01700

18. RURAL DEVELOPMENT COMMENTS:

Not Present.

19. OWNER COMMENTS:

Rural Development needs to be aware of all change orders, as soon as possible, throughout the process.

Project sign must be up before work can start.

Make sure a compliance plan is in place before any work begins.

20. CRST OFFICES COMMENTS:

Not present.

21. QUESTIONS:

None.

MEETING ATTENDANCE ROSTER

DATE	October 26, 2017	
PROJECT	Mni Waste' Water Supply Project – 2.0 MG Elevated Water Tower	BAI No. 20360.06.00
SUBJECT	Pre-Bid Conference	
LOCATION	Mni Waste' Water Company Conference Room, Eagle Butte, South Dakota	

Please provide name, firm name, phone number and email address.

1 NAME:	Kristin Bisgard	EMAIL:	Kristinb@bannerassociates.com
FIRM:	Banner	TEL:	605.692.6342
2 NAME:	Jared Larson	EMAIL:	Jarallel@bannerassociates.com
FIRM:	Banner	TEL:	605-230-0760
3 NAME:	Bob Werling	EMAIL:	bwerling@teamlandmark.com
FIRM:	Landmark Structures	TEL:	817-915-5932
4 NAME:	Doug Abraham	EMAIL:	daa@mayadam.net
FIRM:	May Adam Law Firm	TEL:	605-224-8803
5 NAME:	Leo A. Fischer	EMAIL:	tricity@kikotetwork.com
FIRM:	Munc	TEL:	605-964-8778
6 NAME:	Larry Mauer	EMAIL:	lmauer@hotmail.com
FIRM:	Munc	TEL:	
7 NAME:	Sig Zvejnieks (via phone)	EMAIL:	sigz@bannerassociates.com
FIRM:	BAI	TEL:	605.692.6342
8 NAME:		EMAIL:	
FIRM:		TEL:	
9 NAME:		EMAIL:	
FIRM:		TEL:	
10 NAME:		EMAIL:	
FIRM:		TEL:	